



**STS National Database™**  
Trusted. Transformed. Real-Time.

**Pedimacs**

# STS Pedimacs

## Pediatric Registry for Mechanically Assisted Circulatory Support

Quality Assurance Quarterly Report (2020 Q1) - Recent Year

Hospital X - (Random 50 Patients)

*Implant and event dates: April 1, 2019 to March 31, 2020*

06/01/2020

**Prepared by:**

Intermacs Data Warehouse and Analytics Center  
University of Alabama at Birmingham

James K. Kirklin, MD  
Betsy Blume, MD  
Craig Collum, MPH  
Ryan S. Cantor, PhD  
Nick Timkovich, MSHI  
Maceo Cleggett

**CONFIDENTIAL: This information is only intended for:  
Hospital X - (Random 50 Patients)**

## **About This Report**

STS Pedimacs is the pediatric portion of STS Intermacs which was launched on 9/19/2012. While STS Intermacs has always included durable devices implanted in pediatric patients, STS Pedimacs has been developed to focus on capturing data elements unique to pediatric patients. STS Pedimacs evaluates special issues in the pediatric population receiving Mechanical Circulatory Support Device (MCSD) therapy, differences in devices available, and the particular pediatric population for whom this therapy may be most effective. Elizabeth Blume, M.D. from the Children's Hospital Boston, is the Pedimacs Chair.

**The “Recent Year” version of the Quality Assurance report includes data on all prospective patients receiving a device at your site. This report includes patients implanted in the most recent completed calendar year (2019) and any patients implanted in the current calendar year (2020).**

## **Confidential**

This report is intended only for STS Pedimacs personnel at the hospital named on the cover of this report. Distribution of the report to other personnel within the hospital is left to the discretion of the STS Pedimacs site administrator and physician representative. The STS Pedimacs aggregate data in this report may not be distributed to anyone outside of your hospital. STS Pedimacs has a separate mechanism for the creation and distribution of STS Pedimacs aggregate data.

## **Disclaimer**

STS Pedimacs has attempted to create a high quality report that is a direct result of the data submitted by the STS Pedimacs hospitals. However, STS Pedimacs makes no warranties or representations, either expressed or implied, about the content of this report. STS Pedimacs further disclaims any and all liability whatsoever in any information, material, or content of this report. Any reference in this report to any specific commercial product, service, manufacturer, or company does not constitute its endorsement or recommendation by STS Pedimacs or its employees or agents. None of the material, information or content from this report shall serve as or create a contract between STS Pedimacs and any person or entity accessing and using this report. The recipient of this report agrees to abide by the confidentiality laws of the United States, all other applicable federal and state laws, and applicable policies and guidelines of STS Pedimacs. Comments involving information perceived as inaccurate, misleading, or inappropriate should be directed to: Maceo Cleggett with the Data Warehouse and Analytics Center at [INTERMACS-Reports@uabmc.edu](mailto:INTERMACS-Reports@uabmc.edu).

**This quarterly report includes clinical information from 50 patients receiving prospective implants between April 1, 2019 and March 31, 2020 at Hospital X - (Random 50 Patients).**

## **Table of Contents**

- I. Introduction and Methods**
  - A. Purposes of this Report**
  - B. Source of Data and Limitations**
  - C. Statistical Summaries and Benchmarks for Quality Assurance**
  - D. Registry Compliance**
  - E. Future Reports**
  - F. Report Coverage - Patient Selection**
- II. Statistical Summaries and Benchmarks for Quality Assurance**
  - Section 1 - All Patients**
    - Patient and Device Counts**
  - Section 2 - Patients Recieving a Durable Device**
    - A. Pre-implant Summaries**
      - Demographics
      - Clinical Characteristics
      - Concerns and Contraindications
      - Hemodynamics
      - Functional Capacity and Quality of Life
      - Additional Interventions
    - B. Implant Summaries**
    - C. Post Implant Summary**
      - Adverse Event Rates
      - Hospitals Days
      - 30 Day Readmission
      - Functional Capacity
    - D. Post Implant Outcomes**
      - Survival
      - Competing Outcomes
  - Section 3 - Patients Recieving Temporary Devices Only**
    - A. Pre-implant Summaries**
      - Demographics
      - Clinical Characteristics
      - Concerns and Contraindications
      - Hemodynamics
      - Functional Capacity and Quality of Life
      - Additional Interventions
    - B. Post Implant Outcomes**
      - Survival
      - Competing Outcomes
- III. Registry Compliance**
- IV. Excluded Patients**
- V. Glossary**

## **I. Introduction and Methods**

### **I.A. Purpose of this Report**

As specified by the STS Pedimacs Leadership, the primary goals of the registry are:

- Facilitate the refinement of patient selection to maximize outcomes with current and new device options.
- Identify predictors of good outcomes as well as risk factors for adverse events after device implantation.
- Develop consensus best practice guidelines to improve clinical management by reducing short and long term complications of MCS therapy.
- Guide clinical application and evolution of next generation devices.
- Utilize registry information to guide improvements in technology, particularly as next generation devices evolve.

These reports will provide information in the following areas:

Pedimacs Quality Assurance (QA) Report - this report

- Statistical Summaries and Benchmarks for Quality Assurance
- Registry Compliance

Pedimacs Data Quality (DQ) Report

- Patient Level Data
- Data Quality Queries

## **I.B. Source of Data and Limitations**

The data in this report are based on all data entered into the STS Pedimacs web-based data entry application (WBDE) through March 31, 2020. Patient enrollment in STS Pedimacs began on September 19, 2012. Your institution may have joined STS Pedimacs at a later date and therefore your patient enrollment may have begun at a later date. This report is restricted to your patients who were implanted after your enrollment date and received a primary implant.

STS Pedimacs is a registry that strives to meet the data quality standards of a prospective clinical trial. STS Pedimacs is an on-going registry and therefore data quality efforts will always have an associated lag time.

As you review the data from your hospital that are contained in this report, you may find some information that appears incorrect or inconsistent. Please remember that this report is a direct function of the data that has been entered at your hospital. Therefore, please check any data issues with your online submitted data. The only caveat to this is that any corrections that you have made to your data since March 31, 2020 will not appear in this report. They will appear in the next quarterly report.

A registry that collects data on mechanical circulatory assist devices is necessarily complex. This complexity is the result of the support that the device provides (left ventricular support, right ventricular support, biventricular support, total heart support) and the potential for multiple exchanges within a patient. The major outcomes are just as complex because the standard outcome of death must be considered in the presence of transplantation and explant due to recovery of the heart. We have organized this report so that the pre-implant data represents all prospective device implants of LVAD, BiVAD or TAH. This is based on the organization of the Pedimacs web-based data entry and will allow a complete picture of the patients and devices entered for your hospital.

## **I.C. Statistical Summaries and Benchmarks for Quality Assurance**

A primary purpose of this report is to provide statistical summaries of patients enrolled at the local hospital and to provide side-by-side comparisons of the hospital data with the data from the entire Pedimacs registry. Therefore these reports will provide the data information component of quality assurance where the hospital can compare both their patient mix with a national standard and will also be able to compare their outcomes after device implant with national results.

STS Pedimacs is a valuable source of benchmarking according to what is occurring across the country in the MCSD community. This benchmark is not intended to imply good practice or bad practice but rather allows the hospital to compare the characteristics of their implanted patients with the patients from a national database.

## **I.D. Registry Compliance**

Each hospital is evaluated for compliance with data entry.

## **I.E. Future Reports**

This report is a major step in greatly expanded quarterly reports from STS Pedimacs. We will continue expansion of this report which will be the results of our pre-specified plans and feedback from the MCSD community.

Some of our specific plans include statistical summaries according to primary and secondary implants and also according to adult and pediatric patients. We also plan to add a section that summarizes the results of the initial screening log. This will include a frequency of the reasons for failing to obtain informed consent and a comparison to the national experience.

Probably the most important future enhancement will be risk adjusted evaluation of major outcomes for each hospital. This will occur after the creation of a Pedimacs task force that will address the process to produce multivariable risk factor analyses and will address the statistical methodology to translate the risk factors into risk adjusted comparisons.

## **I.F. Report Coverage - Patient Selection**

The Quality Assurance Report contains information from your site compared to the overall STS Pedimacs experience. To facilitate this comparison only patients receiving at least one durable device is analyzed.

Exclusion reasons from the QA report include:

- a) Retrospective patients (implanted prior to site activation)
- b) Patients receiving at only temporary devices

Transfer patients and their subsequent experience are analyzed in the report for the site that implanted the primary implant.

The accompanying Data Quality Report lists all patients enrolled in STS Pedimacs at your site.

## **II. Statistical Summaries and Benchmarks for Quality Assurance**

The first part of this section contains summary statistics of patients implanted (and enrolled in STS Pedimacs) at your hospital. As a benchmark, the corresponding summary statistics for the entire STS Pedimacs registry are also provided. For explanations and/or definitions of the data elements go to the STS Pedimacs User's Guide [www.uab.edu/medicine/intermacs/pedimacs](http://www.uab.edu/medicine/intermacs/pedimacs) and select Pedimacs Appendices', Appendix M / User's Guide. The summary statistics for continuous variables includes N (the number of patients with data), MEAN (the average value), STD (standard deviation), MIN (the smallest value), and MAX (the largest value).

**Starting 2020 Q1, the statistical summaries and benchmarks for quality assurances portion of this report is organized in 3 section:**

- Section 1 – All Patients
- Section 2 – Patients Receiving Durable Support - Patient details and outcomes based on the patients first durable device implanted and subsequent follow-up
- Section 3 – Patients Receiving Only Temporary Support - Patient details and outcomes based for patients reviewing only temporary devices based on the first temporary device implanted and subsequent follow-up

**COVERAGE: April 1, 2019 - March 31, 2020**

***SITE: Hospital X - (Random 50 Patients)***

**Section 1 - All Patients**

***Exhibit 1: Patient Counts***

**All Patients**

Support Type	HOSPX-8888 (n=50)	Pedimacs (n=169)
Durable	29	107
Temp Only	21	62

**Device Class for First Durable Support**

Device Class	HOSPX-8888 (n=29)	Pedimacs (n=107)
Implantable Continuous	20	64
Paracorporeal Pulsatile	9	43

**Device Class for First Temporary Device for Patients Receiving Only Temporary Support**

Device Class	HOSPX-8888 (n=21)	Pedimacs (n=62)
Paracorporeal Continuous	17	53
Percutaneous	4	9

**STS PEDIMACS QUALITY ASSURANCE QUARTERLY REPORT (2020 Q1)****COVERAGE: April 1, 2019 - March 31, 2020****SITE: Hospital X - (Random 50 Patients)****Section 1 - All Patients****Exhibit 2: Primary and Subsequent Device Counts**

The following tables list the number of implants at your site and STS Pedimacs overall by device sequence (primary, secondary, etc.). NOTE: Subsequent analysis in this section evaluate only primary devices unless specified otherwise.

**HOSPX-8888 (n=50)**

DEVICE #	2019 Q2	2019 Q3	2019 Q4	2020 Q1	TOTAL
Primary Device	11	19	9	11	50
2nd Device	1	6	0	1	8
3rd Device	0	2	0	1	3
4th Device	0	2	0	1	3
5th Device	0	2	0	0	2

**Pedimacs (n=169)**

DEVICE #	2019 Q2	2019 Q3	2019 Q4	2020 Q1	TOTAL
Primary Device	42	55	36	36	169
2nd Device	5	9	7	2	23
3rd Device	2	3	1	2	8
4th Device	0	3	0	1	4
5th Device	0	2	0	0	2



**COVERAGE: April 1, 2019 - March 31, 2020****SITE: Hospital X - (Random 50 Patients)****Section 2 - Patients Receiving a Durable Device****Exhibit 1: Primary and Subsequent Device Counts**

The following tables list the number of implants at your site and STS Pedimacs overall by device sequence (primary, secondary, etc.). NOTE: Subsequent analysis in this section evaluate only primary devices unless specified otherwise.

**HOSPX-8888 (n=29)**

DEVICE #	2019 Q2	2019 Q3	2019 Q4	2020 Q1	TOTAL
Primary Device	6	10	7	6	29
2nd Device	0	3	1	0	4
3rd Device	0	1	1	0	2
4th Device	0	1	1	0	2
5th Device	0	1	1	0	2

**Pedimacs (n=107)**

DEVICE #	2019 Q2	2019 Q3	2019 Q4	2020 Q1	TOTAL
Primary Device	24	33	27	23	107
2nd Device	1	5	6	1	13
3rd Device	1	2	2	0	5
4th Device	0	2	1	0	3
5th Device	0	1	1	0	2

**COVERAGE: April 1, 2019 - March 31, 2020**

**SITE: Hospital X - (Random 50 Patients)**

**Section 2 - Patients Recieving a Durable Device**

**Exhibit 2: Patient Demographics**

**HOSPX-8888 (n=29)**

DEMOGRAPHICS	2019 Q2	2019 Q3	2019 Q4	2020 Q1	TOTAL
Patients (n)	6	10	7	6	29
<b>Age Group</b>					
< 1 yr	0%	40%	0%	16%	17%
1-5 yr	16%	30%	0%	0%	13%
6-10 yr	16%	10%	57%	0%	20%
11-18 yr	66%	20%	42%	83%	48%
<b>Gender</b>					
Female	50%	80%	42%	50%	58%
Male	50%	20%	57%	50%	41%
<b>Race</b>					
African American	16%	10%	0%	33%	13%
White	66%	60%	71%	50%	62%
Other, Unknown, Undisclosed	16%	30%	28%	16%	24%
<b>Ethnicity</b>					
Non-Hispanic	83%	50%	71%	100%	72%
Unknown	16%	0%	0%	0%	3%
Hispanic	0%	50%	28%	0%	24%

**COVERAGE: April 1, 2019 - March 31, 2020**

**SITE: Hospital X - (Random 50 Patients)**

**Section 2 - Patients Recieving a Durable Device**

**Exhibit 2: Patient Demographics**

**Pedimacs (n=107)**

DEMOGRAPHICS	2019 Q2	2019 Q3	2019 Q4	2020 Q1	TOTAL
Patients (n)	24	33	27	23	107
<b>Age Group</b>					
< 1 yr	20%	33%	18%	8%	21%
1-5 yr	12%	24%	11%	34%	20%
6-10 yr	12%	12%	25%	21%	17%
11-18 yr	54%	30%	44%	34%	40%
<b>Gender</b>					
Female	33%	54%	37%	43%	42%
Male	66%	45%	62%	56%	57%
<b>Race</b>					
African American	8%	18%	25%	30%	20%
White	75%	60%	48%	52%	58%
Other, Unknown, Undisclosed	16%	21%	25%	17%	20%
<b>Ethnicity</b>					
Non-Hispanic	70%	81%	85%	86%	81%
Unknown	8%	0%	0%	0%	1%
Hispanic	20%	18%	14%	13%	16%

**COVERAGE: April 1, 2019 - March 31, 2020**

**SITE: Hospital X - (Random 50 Patients)**

**Section 2 - Patients Recieving a Durable Device**

**Exhibit 3: Weight (kg)**

**HOSPX-8888 (n=29)**

	2019 Q2	2019 Q3	2019 Q4	2020 Q1	TOTAL
<b>Patients (n)</b>	<b>6</b>	<b>10</b>	<b>7</b>	<b>6</b>	<b>29</b>
<b>Weight (kg)</b>					
<b>Missing</b>	0%	0%	0%	16%	<b>3%</b>
<b>&lt; 5 kg</b>	0%	10%	0%	0%	<b>3%</b>
<b>5-20 kg</b>	33%	70%	42%	16%	<b>44%</b>
<b>&gt; 20 Kg</b>	66%	20%	57%	66%	<b>48%</b>

**Pedimacs (n=107)**

	2019 Q2	2019 Q3	2019 Q4	2020 Q1	TOTAL
<b>Patients (n)</b>	<b>24</b>	<b>33</b>	<b>27</b>	<b>23</b>	<b>107</b>
<b>Weight (kg)</b>					
<b>Missing</b>	0%	0%	0%	4%	<b>0%</b>
<b>&lt; 5 kg</b>	8%	12%	0%	0%	<b>5%</b>
<b>5-20 kg</b>	29%	51%	40%	34%	<b>40%</b>
<b>&gt; 20 Kg</b>	62%	36%	59%	60%	<b>53%</b>

**COVERAGE: April 1, 2019 - March 31, 2020**

**SITE: Hospital X - (Random 50 Patients)**

**Section 2 - Patients Receiving a Durable Device**

**Exhibit 4: Primary Diagnosis**

**HOSPX-8888 (n=29)**

	2019 Q2	2019 Q3	2019 Q4	2020 Q1	TOTAL
<b>Patients (n)</b>	<b>6</b>	<b>10</b>	<b>7</b>	<b>6</b>	<b>29</b>
<b>Primary Diagnosis</b>					
<i>Congenital Heart Disease – Biventricular</i>	16%	0%	14%	0%	<b>6%</b>
<i>Congenital Heart Disease – Single Ventricle</i>	0%	20%	42%	0%	<b>17%</b>
<i>Dilated Cardiomyopathy</i>	83%	70%	42%	83%	<b>68%</b>
<i>Restrictive Cardiomyopathy</i>	0%	0%	0%	0%	<b>0%</b>
<i>#Valvular Heart Disease#</i>	0%	0%	0%	0%	<b>0%</b>
<i>Other</i>	0%	10%	0%	16%	<b>6%</b>

**Pedimacs (n=107)**

	2019 Q2	2019 Q3	2019 Q4	2020 Q1	TOTAL
<b>Patients (n)</b>	<b>24</b>	<b>33</b>	<b>27</b>	<b>23</b>	<b>107</b>
<b>Primary Diagnosis</b>					
<i>Congenital Heart Disease – Biventricular</i>	12%	12%	7%	0%	<b>8%</b>
<i>Congenital Heart Disease – Single Ventricle</i>	16%	24%	14%	8%	<b>16%</b>
<i>Dilated Cardiomyopathy</i>	62%	60%	74%	78%	<b>68%</b>
<i>Restrictive Cardiomyopathy</i>	0%	0%	3%	4%	<b>1%</b>
<i>#Valvular Heart Disease#</i>	4%	0%	0%	4%	<b>1%</b>
<i>Other</i>	4%	3%	0%	4%	<b>2%</b>

**COVERAGE: April 1, 2019 - March 31, 2020**

**SITE: Hospital X - (Random 50 Patients)**

**Section 2 - Patients Recieving a Durable Device**

**Exhibit 5: Patient Profile Levels**

**HOSPX-8888 (n=29)**

	2019 Q2	2019 Q3	2019 Q4	2020 Q1	TOTAL
<b>Patients (n)</b>	<b>6</b>	<b>10</b>	<b>7</b>	<b>6</b>	<b>29</b>
<b>Patient Profile</b>					
<b>1 Critical Cardiogenic Shock</b>	16%	20%	0%	33%	<b>17%</b>
<b>2 Progressive Decline</b>	66%	70%	71%	50%	<b>65%</b>
<b>3 Stable but Inotrope Dependent</b>	16%	10%	28%	16%	<b>17%</b>
<b>4 Resting Symptoms</b>	0%	0%	0%	0%	<b>0%</b>
<b>5 Exertion Intolerant</b>	0%	0%	0%	0%	<b>0%</b>
<b>7 Advanced NYHA Class 3 or Ross Class II</b>	0%	0%	0%	0%	<b>0%</b>

**Pedimacs (n=107)**

	2019 Q2	2019 Q3	2019 Q4	2020 Q1	TOTAL
<b>Patients (n)</b>	<b>24</b>	<b>33</b>	<b>27</b>	<b>23</b>	<b>107</b>
<b>Patient Profile</b>					
<b>1 Critical Cardiogenic Shock</b>	12%	9%	18%	26%	<b>15%</b>
<b>2 Progressive Decline</b>	62%	75%	66%	52%	<b>65%</b>
<b>3 Stable but Inotrope Dependent</b>	20%	9%	14%	21%	<b>15%</b>
<b>4 Resting Symptoms</b>	4%	0%	0%	0%	<b>0%</b>
<b>5 Exertion Intolerant</b>	0%	3%	0%	0%	<b>0%</b>
<b>7 Advanced NYHA Class 3 or Ross Class II</b>	0%	3%	0%	0%	<b>0%</b>

**COVERAGE: April 1, 2019 - March 31, 2020**

***SITE: Hospital X - (Random 50 Patients)***

**Section 2 - Patients Receiving a Durable Device**

***Exhibit 6: Device Strategy***

**HOSPX-8888 (n=29)**

	2019 Q2	2019 Q3	2019 Q4	2020 Q1	TOTAL
<b>Patients (n)</b>	<b>6</b>	<b>10</b>	<b>7</b>	<b>6</b>	<b>29</b>
<b>Current Device Strategy</b>					
<b><i>BTT - Listed</i></b>	50%	60%	28%	16%	<b>41%</b>
<b><i>BTT - Likely</i></b>	50%	20%	42%	50%	<b>37%</b>
<b><i>BTT - Moderate</i></b>	0%	10%	28%	33%	<b>17%</b>
<b><i>BTT - Unlikely</i></b>	0%	0%	0%	0%	<b>0%</b>
<b><i>Destination Therapy</i></b>	0%	10%	0%	0%	<b>3%</b>
<b><i>Bridge to Recovery</i></b>	0%	0%	0%	0%	<b>0%</b>

**Pedimacs (n=107)**

	2019 Q2	2019 Q3	2019 Q4	2020 Q1	TOTAL
<b>Patients (n)</b>	<b>24</b>	<b>33</b>	<b>27</b>	<b>23</b>	<b>107</b>
<b>Current Device Strategy</b>					
<b><i>BTT - Listed</i></b>	54%	54%	44%	43%	<b>49%</b>
<b><i>BTT - Likely</i></b>	37%	24%	33%	39%	<b>32%</b>
<b><i>BTT - Moderate</i></b>	4%	12%	11%	8%	<b>9%</b>
<b><i>BTT - Unlikely</i></b>	0%	0%	3%	0%	<b>0%</b>
<b><i>Destination Therapy</i></b>	4%	6%	3%	0%	<b>3%</b>
<b><i>Bridge to Recovery</i></b>	0%	3%	3%	8%	<b>3%</b>

**COVERAGE: April 1, 2019 - March 31, 2020*****SITE: Hospital X - (Random 50 Patients)******Section 2 - Patients Receiving a Durable Device******Exhibit 7: Medications*****HOSPX-8888 (n=29)**

MEDICATIONS	2019 Q2	2019 Q3	2019 Q4	2020 Q1	Total
Patients (n)	6	10	7	6	29
IV Inotropes at Implant	100%	100%	100%	100%	100%
Pre-implant Loop Diuretics	67%	100%	57%	83%	79%

**Pedimacs (n=107)**

MEDICATIONS	2019 Q2	2019 Q3	2019 Q4	2020 Q1	Total
Patients (n)	24	33	27	23	107
IV Inotropes at Implant	96%	97%	96%	100%	97%
Pre-implant Loop Diuretics	79%	91%	81%	83%	84%



**COVERAGE: April 1, 2019 - March 31, 2020**

**SITE: Hospital X - (Random 50 Patients)**

**Section 2 - Patients Recieving a Durable Device**

**Exhibit 8: Laboratories**

**HOSPX-8888 (n=29)**

PRE-IMPLANT LABORATORIES		2019 Q2	2019 Q3	2019 Q4	2020 Q1	TOTAL
Patients	n	6	10	7	6	29
Sodium (mEq/L)	Mean	134.17	138.30	137.43	139.00	137.38
	Std	3.31	5.23	4.08	4.24	4.54
	Missing	0	0	0	0	0
Potassium (mEq/L)	Mean	3.92	4.04	3.84	3.75	3.91
	Std	0.51	0.70	0.48	0.59	0.57
	Missing	0	0	0	0	0
BUN (mg/dL)	Mean	15.17	26.92	21.29	34.85	24.77
	Std	4.96	17.73	6.70	32.69	18.76
	Missing	0	0	0	0	0
Creatinine (mg/dL)	Mean	0.37	0.35	0.63	1.26	0.61
	Std	0.11	0.18	0.30	1.41	0.72
	Missing	0	0	0	0	0
Alanine Aminotransferase/ALT (u/L)	Mean	197.40	72.30	46.67	137.83	104.33
	Std	391.96	156.77	25.29	225.99	212.54
	Missing	1	0	1	0	2
Aspartate Aminotransferase/AST (u/L)	Mean	220.40	79.90	55.50	172.83	121.15
	Std	424.12	65.18	30.88	172.13	197.95
	Missing	1	0	1	0	2
LDH (µkat/L), (U/L)	Mean	558.40	608.20	633.14	1611.00	832.73
	Std	454.03	477.93	574.66	2352.15	1190.96
	Missing	1	5	0	1	7
Total Bilirubin (mg/dL)	Mean	0.80	1.34	1.78	5.25	2.15
	Std	0.80	1.43	1.19	8.99	4.22
	Missing	1	2	1	1	5
Albumin (g/dL)	Mean	3.57	3.80	3.50	3.20	3.57
	Std	0.68	0.56	0.63	0.16	0.58
	Missing	0	0	0	1	1
Pre-albumin (mg/dL)	Mean	19.00	16.70	23.00	13.90	19.77
	Std			5.46		5.20
	Missing	5	9	4	5	23

(Continued)

**COVERAGE: April 1, 2019 - March 31, 2020**

**SITE: Hospital X - (Random 50 Patients)**

**Section 2 - Patients Receiving a Durable Device**

**Exhibit 8: Laboratories**

**HOSPX-8888 (n=29)**

PRE-IMPLANT LABORATORIES		2019 Q2	2019 Q3	2019 Q4	2020 Q1	TOTAL
Total Cholesterol (mg/dL)	Mean		154.00	169.00		164.00
	Std			1.41		8.72
	Missing	6	9	5	6	26
Brain Natriuretic Peptide (pg/mL)	Mean	1784.50	1945.00	1680.33	2054.00	1826.65
	Std	2086.38	2022.35	1285.77	2211.83	1637.18
	Missing	2	5	1	4	12
Pro Brain Natriuretic Peptide (pg/mL)	Mean	6104.50	24232.67	9061.00	8954.00	13984.50
	Std	3713.02	20619.37		637.81	14033.77
	Missing	4	7	6	4	21
White Blood Cell Count (x10/ $\mu$ L)	Mean	8.77	11.04	9.21	16.29	11.21
	Std	2.22	6.08	4.63	9.11	6.32
	Missing	0	0	0	0	0
Hemoglobin (g/dL)	Mean	11.37	12.45	12.01	10.35	11.69
	Std	1.33	2.70	2.12	1.46	2.16
	Missing	0	0	0	0	0
Platelets (x10/ $\mu$ L)	Mean	200.33	199.10	242.14	230.50	216.24
	Std	95.84	100.01	71.55	114.84	93.15
	Missing	0	0	0	0	0
INR	Mean	1.30	1.41	1.77	1.35	1.47
	Std	0.32	0.35	1.19	0.13	0.65
	Missing	0	0	0	2	2

**Pedimacs (n=107)**

PRE-IMPLANT LABORATORIES		2019 Q2	2019 Q3	2019 Q4	2020 Q1	TOTAL
Patients	n	24	33	27	23	107
Sodium (mEq/L)	Mean	136.79	137.24	137.52	138.22	137.42
	Std	4.21	5.43	5.75	6.49	5.46
	Missing	0	0	0	0	0
Potassium (mEq/L)	Mean	3.83	3.95	3.85	3.81	3.87
	Std	0.45	0.60	0.58	0.81	0.61
	Missing	0	0	0	0	0

(Continued)

**COVERAGE: April 1, 2019 - March 31, 2020**

**SITE: Hospital X - (Random 50 Patients)**

**Section 2 - Patients Recieving a Durable Device**

**Exhibit 8: Laboratories**

**Pedimacs (n=107)**

PRE-IMPLANT LABORATORIES		2019 Q2	2019 Q3	2019 Q4	2020 Q1	TOTAL
BUN (mg/dL)	Mean	16.21	24.18	19.47	29.01	22.22
	Std	6.43	16.54	7.59	28.92	17.34
	Missing	0	1	0	0	1
Creatinine (mg/dL)	Mean	0.52	0.45	0.57	0.84	0.58
	Std	0.28	0.27	0.29	0.97	0.53
	Missing	0	0	1	0	1
Alanine Aminotransferase/ALT (u/L)	Mean	87.27	89.75	76.54	102.82	88.67
	Std	192.02	206.59	133.54	162.01	175.27
	Missing	2	1	1	1	5
Aspartate Aminotransferase/AST (u/L)	Mean	113.05	100.09	60.31	107.00	94.24
	Std	214.12	195.09	64.26	125.07	160.96
	Missing	2	1	1	1	5
LDH (µkat/L), (U/L)	Mean	625.77	698.80	729.73	1109.92	778.46
	Std	460.95	626.19	598.42	1472.11	845.70
	Missing	11	13	12	10	46
Total Bilirubin (mg/dL)	Mean	1.52	1.24	1.30	2.34	1.56
	Std	2.24	1.09	1.26	5.01	2.69
	Missing	3	6	6	4	19
Albumin (g/dL)	Mean	3.48	3.61	3.57	3.57	3.56
	Std	0.64	0.68	0.64	0.95	0.72
	Missing	0	0	1	1	2
Pre-albumin (mg/dL)	Mean	17.64	17.77	20.11	15.08	18.05
	Std	5.84	7.76	5.29	3.58	5.81
	Missing	17	27	19	19	82
Total Cholesterol (mg/dL)	Mean	118.50	104.00	143.67	119.25	120.08
	Std	52.77	35.65	38.48	20.25	40.04
	Missing	18	25	21	19	83
Brain Natriuretic Peptide (pg/mL)	Mean	1622.70	1888.44	1929.88	2780.86	2067.10
	Std	1280.57	1850.02	1052.62	1747.26	1555.64
	Missing	14	15	10	9	48

(Continued)

**COVERAGE: April 1, 2019 - March 31, 2020**

**SITE: Hospital X - (Random 50 Patients)**

**Section 2 - Patients Recieving a Durable Device**

**Exhibit 8: Laboratories**

**Pedimacs (n=107)**

PRE-IMPLANT LABORATORIES		2019 Q2	2019 Q3	2019 Q4	2020 Q1	TOTAL
Pro Brain Natriuretic Peptide (pg/mL)	Mean	13024.00	17735.75	10621.29	8860.80	13026.03
	Std	18288.12	21361.64	12323.41	6881.09	16119.15
	Missing	15	25	20	18	78
White Blood Cell Count (x10/ $\mu$ L)	Mean	10.20	10.26	9.64	13.01	10.68
	Std	5.80	4.55	5.40	8.57	6.12
	Missing	0	0	0	0	0
Hemoglobin (g/dL)	Mean	11.69	12.20	11.49	11.17	11.68
	Std	3.16	2.32	1.48	3.00	2.52
	Missing	0	0	0	0	0
Platelets (x10/ $\mu$ L)	Mean	210.58	220.72	213.77	234.57	219.71
	Std	89.48	78.58	87.09	90.75	85.17
	Missing	0	1	1	0	2
INR	Mean	1.38	1.43	1.46	1.27	1.39
	Std	0.34	0.42	0.83	0.17	0.51
	Missing	2	1	3	5	11

**COVERAGE: April 1, 2019 - March 31, 2020**

**SITE: Hospital X - (Random 50 Patients)**

**Section 2 - Patients Recieving a Durable Device**

**Exhibit 8: Laboratories**

**HOSPX-8888 (n=29)**

	2019 Q2	2019 Q3	2019 Q4	2020 Q1	TOTAL
<b>Patients (n)</b>	<b>6</b>	<b>10</b>	<b>7</b>	<b>6</b>	<b>29</b>
<b>Lupus Anticoagulant</b>					
<b>Negative</b>	0%	0%	14%	0%	<b>3%</b>
<b>Unknown</b>	100%	100%	85%	100%	<b>96%</b>

**Pedimacs (n=107)**

	2019 Q2	2019 Q3	2019 Q4	2020 Q1	TOTAL
<b>Patients (n)</b>	<b>24</b>	<b>33</b>	<b>27</b>	<b>23</b>	<b>107</b>
<b>Lupus Anticoagulant</b>					
<b>Negative</b>	0%	0%	11%	4%	<b>3%</b>
<b>Unknown</b>	100%	100%	88%	95%	<b>96%</b>

**COVERAGE: April 1, 2019 - March 31, 2020**

**SITE: Hospital X - (Random 50 Patients)**

**Section 2 - Patients Receiving a Durable Device**

**Exhibit 9: Pre-Implant Concerns**

**HOSPX-8888 (n=29)**

PRE-IMPLANT CONCERNS	2019 Q2	2019 Q3	2019 Q4	2020 Q1	Total
Patients (n)	6	10	7	6	29
Patient/Family Does Not Want Transplant	0%	10%	0%	0%	3%
Musculoskeletal Limitation	0%	10%	0%	0%	3%
Contraindication to Immunosuppression	0%	0%	14%	0%	3%
Allosensitization	0%	0%	14%	0%	3%
Frailty	0%	0%	0%	17%	3%
Chronic Renal Disease	0%	0%	14%	0%	3%
Frequent ICD Shocks	0%	0%	0%	0%	0%
Pulmonary Disease	0%	0%	0%	0%	0%
Pulmonary Hypertension	0%	0%	29%	0%	7%
Recent Pulmonary Embolus	0%	0%	0%	0%	0%
History of Atrial Arrhythmia	0%	30%	14%	17%	17%
Unfavorable Mediastinal Anatomy	0%	0%	29%	0%	7%
Thoracic Aortic Disease	0%	0%	0%	0%	0%
Tracheostomy	0%	0%	0%	0%	0%
Plastic Bronchitis	0%	0%	0%	0%	0%
Large BMI	0%	0%	14%	0%	3%
Severe Diabetes	0%	0%	0%	0%	0%
Malnutrition/Cachexia	0%	0%	0%	0%	0%
History of GI Ulcers	0%	0%	0%	0%	0%
History of Hepatitis	0%	0%	0%	0%	0%
Liver Dysfunction	0%	0%	0%	0%	0%
Anasarca	0%	0%	0%	0%	0%
Protein Losing Enteropathy	0%	0%	0%	0%	0%
Genetic Syndrome	0%	0%	0%	0%	0%
Heparin-induced Thrombocytopenia	0%	0%	0%	0%	0%
Chronic Coagulopathy	0%	0%	0%	0%	0%
Major Stroke	0%	10%	14%	0%	7%
Other Cerebrovascular Disease	0%	0%	0%	0%	0%
Peripheral Vascular Disease	0%	0%	0%	0%	0%
History of Solid Organ Cancer	0%	0%	0%	0%	0%
History of Lymphoma, Leukemia	0%	0%	0%	0%	0%
History of Bone Marrow Transplant (BMT)	0%	0%	0%	0%	0%

(Continued)

**COVERAGE: April 1, 2019 - March 31, 2020****SITE: Hospital X - (Random 50 Patients)****Section 2 - Patients Recieving a Durable Device****Exhibit 9: Pre-Implant Concerns****HOSPX-8888 (n=29)**

<b>PRE-IMPLANT CONCERNS</b>	<b>2019 Q2</b>	<b>2019 Q3</b>	<b>2019 Q4</b>	<b>2020 Q1</b>	<b>Total</b>
History of HIV	0%	0%	0%	0%	<b>0%</b>
Chronic Infectious Concerns	0%	0%	0%	0%	<b>0%</b>
Limited cognition/understanding	0%	0%	0%	0%	<b>0%</b>
Limited social support	0%	10%	0%	0%	<b>3%</b>
Repeated non-compliance	0%	0%	0%	0%	<b>0%</b>
History of illicit drug use	0%	0%	0%	0%	<b>0%</b>
History of alcohol abuse	0%	0%	0%	0%	<b>0%</b>
Narcotic dependence	0%	0%	0%	0%	<b>0%</b>
History of smoking	0%	0%	0%	0%	<b>0%</b>
Currently smoking	0%	0%	0%	0%	<b>0%</b>
Severe depression	0%	0%	0%	0%	<b>0%</b>
Other major psychiatric diagnosis	0%	0%	0%	0%	<b>0%</b>
Neurological/developmental abnormalities	0%	10%	0%	0%	<b>3%</b>
Other co-morbidity	17%	0%	0%	0%	<b>3%</b>

**COVERAGE: April 1, 2019 - March 31, 2020**

**SITE: Hospital X - (Random 50 Patients)**

**Section 2 - Patients Recieving a Durable Device**

**Exhibit 9: Pre-Implant Concerns**

**Pedimacs (n=107)**

<b>PRE-IMPLANT CONCERNS</b>	<b>2019 Q2</b>	<b>2019 Q3</b>	<b>2019 Q4</b>	<b>2020 Q1</b>	<b>Total</b>
<b>Patients (n)</b>	<b>24</b>	<b>33</b>	<b>27</b>	<b>23</b>	<b>107</b>
<b>Patient/Family Does Not Want Transplant</b>	0%	3%	0%	0%	1%
<b>Musculoskeletal Limitation</b>	0%	3%	0%	4%	2%
<b>Contraindication to Immunosuppression</b>	0%	0%	7%	0%	2%
<b>Allosensitization</b>	0%	3%	4%	0%	2%
<b>Frailty</b>	0%	3%	4%	22%	7%
<b>Chronic Renal Disease</b>	0%	3%	4%	4%	3%
<b>Frequent ICD Shocks</b>	0%	0%	0%	0%	0%
<b>Pulmonary Disease</b>	0%	0%	0%	0%	0%
<b>Pulmonary Hypertension</b>	4%	6%	11%	4%	7%
<b>Recent Pulmonary Embolus</b>	0%	0%	0%	0%	0%
<b>History of Atrial Arrhythmia</b>	0%	9%	7%	9%	7%
<b>Unfavorable Mediastinal Anatomy</b>	4%	0%	19%	0%	6%
<b>Thoracic Aortic Disease</b>	0%	0%	0%	4%	1%
<b>Tracheostomy</b>	0%	0%	0%	0%	0%
<b>Plastic Bronchitis</b>	0%	0%	0%	0%	0%
<b>Large BMI</b>	4%	6%	7%	0%	5%
<b>Severe Diabetes</b>	0%	0%	0%	0%	0%
<b>Malnutrition/Cachexia</b>	0%	3%	4%	13%	5%
<b>History of GI Ulcers</b>	0%	0%	0%	0%	0%
<b>History of Hepatitis</b>	0%	0%	0%	0%	0%
<b>Liver Dysfunction</b>	0%	0%	0%	4%	1%
<b>Anasarca</b>	4%	0%	0%	0%	1%
<b>Protein Losing Enteropathy</b>	0%	0%	0%	0%	0%
<b>Genetic Syndrome</b>	4%	0%	0%	0%	1%
<b>Heparin-induced Thrombocytopenia</b>	0%	0%	0%	0%	0%
<b>Chronic Coagulopathy</b>	0%	0%	0%	0%	0%
<b>Major Stroke</b>	0%	3%	7%	0%	3%
<b>Other Cerebrovascular Disease</b>	0%	0%	0%	0%	0%
<b>Peripheral Vascular Disease</b>	0%	0%	0%	0%	0%
<b>History of Solid Organ Cancer</b>	0%	0%	4%	0%	1%
<b>History of Lymphoma, Leukemia</b>	0%	0%	0%	0%	0%
<b>History of Bone Marrow Transplant (BMT)</b>	0%	0%	0%	0%	0%

**(Continued)**



**COVERAGE: April 1, 2019 - March 31, 2020*****SITE: Hospital X - (Random 50 Patients)******Section 2 - Patients Recieving a Durable Device******Exhibit 9: Pre-Implant Concerns*****Pedimacs (n=107)**

<b>PRE-IMPLANT CONCERNS</b>	<b>2019 Q2</b>	<b>2019 Q3</b>	<b>2019 Q4</b>	<b>2020 Q1</b>	<b>Total</b>
History of HIV	0%	0%	0%	0%	<b>0%</b>
Chronic Infectious Concerns	0%	3%	0%	0%	<b>1%</b>
Limited cognition/understanding	0%	0%	0%	0%	<b>0%</b>
Limited social support	0%	6%	4%	0%	<b>3%</b>
Repeated non-compliance	0%	0%	0%	0%	<b>0%</b>
History of illicit drug use	4%	0%	0%	0%	<b>1%</b>
History of alcohol abuse	0%	0%	0%	0%	<b>0%</b>
Narcotic dependence	0%	0%	0%	0%	<b>0%</b>
History of smoking	4%	0%	0%	0%	<b>1%</b>
Currently smoking	0%	0%	0%	0%	<b>0%</b>
Severe depression	0%	0%	0%	0%	<b>0%</b>
Other major psychiatric diagnosis	9%	0%	0%	0%	<b>2%</b>
Neurological/developmental abnormalities	4%	3%	0%	0%	<b>2%</b>
Other co-morbidity	8%	0%	4%	0%	<b>3%</b>

**COVERAGE: April 1, 2019 - March 31, 2020****SITE: Hospital X - (Random 50 Patients)****Section 2 - Patients Receiving a Durable Device****Exhibit 10: General Hemodynamics**

The following table compare pre-implant general hemodynamics for patients receiving durable devices at your site and STS Pedimacs overall.

**HOSPX-8888 (n=29)**

PRE-IMPLANT GENERAL HEMODYNAMICS		2019 Q2	2019 Q3	2019 Q4	2020 Q1	TOTAL
Patients	n	6	10	7	6	29
Heart Rate	Mean	78.00	116.25	111.75	151.00	117.45
	Std		7.76	16.38	2.83	22.22
	Missing	5	6	3	4	18

**Pedimacs (n=107)**

PRE-IMPLANT GENERAL HEMODYNAMICS		2019 Q2	2019 Q3	2019 Q4	2020 Q1	TOTAL
Patients	n	24	33	27	23	107
Heart Rate	Mean	97.13	123.92	107.91	141.00	114.97
	Std	28.29	31.86	25.86	12.36	30.13
	Missing	16	20	16	19	71

**COVERAGE: April 1, 2019 - March 31, 2020****SITE: Hospital X - (Random 50 Patients)****Section 2 - Patients Receiving a Durable Device****Exhibit 11: Echo Hemodynamics**

The following table compare pre-implant LVEDD for patients receiving durable devices at your site and STS Pedimacs overall.

**HOSPX-8888 (n=29)**

		2019 Q2	2019 Q3	2019 Q4	2020 Q1	TOTAL
Patients	n	6	10	7	6	29
LVEDD	Mean	6.62	5.13	9.52	5.65	6.30
	Std	1.46	0.92		2.05	1.74
	Missing	1	7	6	4	18

**Pedimacs (n=107)**

		2019 Q2	2019 Q3	2019 Q4	2020 Q1	TOTAL
Patients	n	24	33	27	23	107
LVEDD	Mean	6.01	5.41	6.11	6.24	5.93
	Std	1.80	1.22	2.19	1.25	1.62
	Missing	9	19	16	10	54

**COVERAGE: April 1, 2019 - March 31, 2020**

**SITE: Hospital X - (Random 50 Patients)**

**Section 2 - Patients Recieving a Durable Device**

**Exhibit 11: Echo Hemodynamics**

The following tables summarizes pre-implant RVEF at your site and STS Pedimacs.

**HOSPX-8888 (n=29)**

	2019 Q2	2019 Q3	2019 Q4	2020 Q1	TOTAL
<b>Patients (n)</b>	<b>6</b>	<b>10</b>	<b>7</b>	<b>6</b>	<b>29</b>
<b>RVEF</b>					
<i>Normal</i>	16%	20%	14%	0%	<b>13%</b>
<i>Mild</i>	16%	0%	0%	33%	<b>10%</b>
<i>Moderate</i>	0%	10%	0%	33%	<b>10%</b>
<i>Severe</i>	16%	30%	42%	16%	<b>27%</b>
<i>Not Done</i>	33%	40%	14%	16%	<b>27%</b>
<i>Not Applicable</i>	0%	0%	14%	0%	<b>3%</b>
<i>Unknown</i>	16%	0%	14%	0%	<b>6%</b>
<b>Aortic Regurgitation</b>					
<i>0 (none)</i>	66%	60%	42%	50%	<b>55%</b>
<i>1 (mild)</i>	16%	20%	14%	50%	<b>24%</b>
<i>2 (moderate)</i>	0%	0%	0%	0%	<b>0%</b>
<i>Not Recorded or Not Documented</i>	16%	20%	42%	0%	<b>20%</b>

**Pedimacs (n=107)**

	2019 Q2	2019 Q3	2019 Q4	2020 Q1	TOTAL
<b>Patients (n)</b>	<b>24</b>	<b>33</b>	<b>27</b>	<b>23</b>	<b>107</b>
<b>RVEF</b>					
<i>Normal</i>	16%	6%	22%	8%	<b>13%</b>
<i>Mild</i>	8%	15%	7%	8%	<b>10%</b>
<i>Moderate</i>	25%	12%	7%	13%	<b>14%</b>
<i>Severe</i>	8%	12%	18%	17%	<b>14%</b>
<i>Not Done</i>	20%	27%	22%	34%	<b>26%</b>
<i>Not Applicable</i>	8%	3%	3%	4%	<b>4%</b>
<i>Unknown</i>	12%	24%	18%	13%	<b>17%</b>
<b>Aortic Regurgitation</b>					
<i>0 (none)</i>	54%	57%	48%	52%	<b>53%</b>
<i>1 (mild)</i>	33%	21%	14%	30%	<b>24%</b>
<i>2 (moderate)</i>	0%	3%	3%	4%	<b>2%</b>
<i>Not Recorded or Not Documented</i>	12%	18%	33%	13%	<b>19%</b>

**COVERAGE: April 1, 2019 - March 31, 2020**

**SITE: Hospital X - (Random 50 Patients)**

**Section 2 - Patients Recieving a Durable Device**

**Exhibit 12: Swan Hemodynamics**

**HOSPX-8888 (n=29)**

SWAN HEMODYNAMICS		2019 Q2	2019 Q3	2019 Q4	2020 Q1	TOTAL
Patients	n	6	10	7	6	29
Pulmonary Artery Systolic Pressure (mmHg)	Mean	68.00	44.00	32.67	66.50	47.89
	Std		29.87	23.69	31.82	26.83
	Missing	5	7	4	4	20
Pulmonary Artery Diastolic Pressure (mmHg)	Mean	45.00	29.67	24.67	37.00	31.33
	Std		22.14	13.43	5.66	14.86
	Missing	5	7	4	4	20
Mean RA Pressure (mmHg)	Mean	22.00	15.33	15.00	13.00	15.86
	Std		2.08	7.07		4.22
	Missing	5	7	5	5	22
Pulmonary Artery Wedge Pressure (mmHg)	Mean	49.00	20.00	13.00	30.00	26.40
	Std		5.66			14.29
	Missing	5	8	6	5	24
Cardiac Index	Mean		1.67	0.30	1.63	1.31
	Std				0.33	0.70
	Missing	6	9	6	4	25

**COVERAGE: April 1, 2019 - March 31, 2020**

**SITE: Hospital X - (Random 50 Patients)**

**Section 2 - Patients Recieving a Durable Device**

**Exhibit 12: Swan Hemodynamics**

**Pedimacs (n=107)**

SWAN HEMODYNAMICS		2019 Q2	2019 Q3	2019 Q4	2020 Q1	TOTAL
Patients	n	24	33	27	23	107
Pulmonary Artery Systolic Pressure (mmHg)	Mean	60.40	42.62	32.86	50.00	45.18
	Std	23.61	18.69	14.26	19.23	19.94
	Missing	19	20	20	14	73
Pulmonary Artery Diastolic Pressure (mmHg)	Mean	38.80	26.00	20.43	28.22	27.36
	Std	12.87	11.12	8.94	8.41	11.30
	Missing	19	21	20	14	74
Mean RA Pressure (mmHg)	Mean	12.78	15.73	15.33	11.00	14.00
	Std	7.48	5.48	6.78	5.74	6.36
	Missing	15	18	18	14	65
Pulmonary Artery Wedge Pressure (mmHg)	Mean	34.60	20.45	20.17	22.50	23.30
	Std	10.64	4.50	12.38	8.43	9.67
	Missing	19	22	21	15	77
Cardiac Index	Mean	1.92	2.75	1.61	2.36	2.30
	Std	0.32	1.42	1.02	0.90	1.10
	Missing	17	22	23	16	78

**COVERAGE: April 1, 2019 - March 31, 2020**

***SITE: Hospital X - (Random 50 Patients)***

**Section 2 - Patients Recieving a Durable Device**

***Exhibit 13: ECG Cardiac Rhythm***

The following tables summarizes pre-implant ECG cardiac rhythm at your site and STS Pedimacs.

**HOSPX-8888 (n=29)**

	2019 Q2	2019 Q3	2019 Q4	2020 Q1	TOTAL
<b>Patients (n)</b>	<b>6</b>	<b>10</b>	<b>7</b>	<b>6</b>	<b>29</b>
<b>ECG Rhythm</b>					
<i>Sinus</i>	100%	90%	57%	66%	<b>79%</b>
<i>Atrial fibrillation</i>	0%	0%	0%	16%	<b>3%</b>
<i>Paced: Ventricular pacing</i>	0%	0%	14%	0%	<b>3%</b>
<i>Paced: Atrial and ventricular pacing</i>	0%	0%	0%	16%	<b>3%</b>
<i>Other, specify</i>	0%	10%	28%	0%	<b>10%</b>

**Pedimacs (n=107)**

	2019 Q2	2019 Q3	2019 Q4	2020 Q1	TOTAL
<b>Patients (n)</b>	<b>24</b>	<b>33</b>	<b>27</b>	<b>23</b>	<b>107</b>
<b>ECG Rhythm</b>					
<i>Sinus</i>	83%	84%	77%	73%	<b>80%</b>
<i>Atrial fibrillation</i>	0%	0%	0%	4%	<b>0%</b>
<i>Paced: Ventricular pacing</i>	0%	6%	3%	4%	<b>3%</b>
<i>Paced: Atrial and ventricular pacing</i>	4%	0%	3%	8%	<b>3%</b>
<i>Other, specify</i>	12%	9%	14%	8%	<b>11%</b>

**COVERAGE: April 1, 2019 - March 31, 2020**

***SITE: Hospital X - (Random 50 Patients)***

***Section 2 - Patients Receiving a Durable Device***

***Exhibit 14: VAD Indication***

The following table summarizes additional implant reasons that necessitated the placement of a VAD at your site and STS Pedimacs.

**HOSPX-8888 (n=29)**

	2019 Q2	2019 Q3	2019 Q4	2020 Q1	TOTAL
<b>Patients (n)</b>	<b>6</b>	<b>10</b>	<b>7</b>	<b>6</b>	<b>29</b>
<b>VAD Indication</b>					
<b>Post Cardiac Surgery</b>	0%	0%	0%	0%	<b>0%</b>
<b>None</b>	100%	80%	100%	83%	<b>89%</b>
<b>Failure to Wean from ECMO</b>	0%	20%	0%	16%	<b>10%</b>

**Pedimacs (n=107)**

	2019 Q2	2019 Q3	2019 Q4	2020 Q1	TOTAL
<b>Patients (n)</b>	<b>24</b>	<b>33</b>	<b>27</b>	<b>23</b>	<b>107</b>
<b>VAD Indication</b>					
<b>Post Cardiac Surgery</b>	0%	3%	3%	0%	<b>1%</b>
<b>None</b>	87%	87%	88%	91%	<b>88%</b>
<b>Failure to Wean from ECMO</b>	12%	9%	7%	8%	<b>9%</b>



**COVERAGE: April 1, 2019 - March 31, 2020**

**SITE: Hospital X - (Random 50 Patients)**

**Section 2 - Patients Recieving a Durable Device**

**Exhibit 15: Device Type**

The following tables summarizes the implant side (location) of VADs at your site and STS Pedimacs.

**HOSPX-8888 (n=29)**

	2019 Q2	2019 Q3	2019 Q4	2020 Q1	TOTAL
<b>Patients (n)</b>	<b>6</b>	<b>10</b>	<b>7</b>	<b>6</b>	<b>29</b>
<b>Device Type</b>					
<b>LVAD</b>	83%	70%	57%	66%	<b>68%</b>
<b>RVAD</b>	0%	20%	28%	0%	<b>13%</b>
<b>BiVAD</b>	16%	10%	14%	33%	<b>17%</b>

**Pedimacs (n=107)**

	2019 Q2	2019 Q3	2019 Q4	2020 Q1	TOTAL
<b>Patients (n)</b>	<b>24</b>	<b>33</b>	<b>27</b>	<b>23</b>	<b>107</b>
<b>Device Type</b>					
<b>LVAD</b>	79%	84%	70%	82%	<b>79%</b>
<b>RVAD</b>	8%	6%	7%	0%	<b>5%</b>
<b>BiVAD</b>	12%	9%	22%	17%	<b>14%</b>

**COVERAGE: April 1, 2019 - March 31, 2020**

**SITE: Hospital X - (Random 50 Patients)**

**Section 2 - Patients Recieving a Durable Device**

**Exhibit 16: Previous Cardiac Operations**

This table lists the cardiac operations that the patient had prior to MCSD implantation.

**HOSPX-8888 (n=29)**

PREVIOUS CARDIAC OPERATIONS	2019 Q2	2019 Q3	2019 Q4	2020 Q1	Total
Patients (n)	6	10	7	6	29
None	100%	30%	14%	50%	45%
CABG	0%	0%	14%	0%	3%
Aneurymectomy (DOR)	0%	0%	0%	0%	0%
Aortic Valve replacement / repair	0%	0%	14%	0%	3%
Mitral Valve replacement / repair	0%	0%	14%	0%	3%
Tricuspid replacement /repair	0%	0%	0%	0%	0%
Congenital card surgery	0%	30%	71%	17%	31%
LVAD	0%	20%	14%	17%	14%
RVAD	0%	0%	14%	0%	3%
TAH	0%	0%	0%	0%	0%
Previous heart transplant	0%	10%	0%	0%	3%
Previous ECMO	0%	30%	14%	17%	17%
Other, specify	0%	20%	0%	33%	14%

**Pedimacs (n=107)**

PREVIOUS CARDIAC OPERATIONS	2019 Q2	2019 Q3	2019 Q4	2020 Q1	Total
Patients (n)	24	33	27	23	107
None	63%	42%	59%	61%	55%
CABG	0%	0%	4%	0%	1%
Aneurymectomy (DOR)	0%	0%	0%	0%	0%
Aortic Valve replacement / repair	8%	3%	4%	4%	5%
Mitral Valve replacement / repair	4%	0%	7%	0%	3%
Tricuspid replacement /repair	0%	3%	4%	0%	2%
Congenital card surgery	17%	39%	26%	22%	27%
LVAD	8%	9%	7%	4%	7%
RVAD	0%	0%	4%	0%	1%
TAH	0%	0%	0%	0%	0%
Previous heart transplant	0%	3%	0%	0%	1%
Previous ECMO	8%	15%	7%	9%	10%
Other, specify	13%	9%	4%	13%	9%

**COVERAGE: April 1, 2019 - March 31, 2020**

**SITE: Hospital X - (Random 50 Patients)**

**Section 2 - Patients Recieving a Durable Device**

**Exhibit 17: Clinical Events and Interventions during Implant Hospitalization**

This table lists the interventions that occurred during the implant hospitalization.

**HOSPX-8888 (n=29)**

IMPLANT HOSPITALIZATION EVENTS	2019 Q2	2019 Q3	2019 Q4	2020 Q1	Total
Patients (n)	6	10	7	6	29
None	50%	0%	29%	17%	21%
CABG	0%	0%	0%	0%	0%
Aortic Valve replacement / repair	0%	0%	0%	0%	0%
Mitral Valve replacement / repair	0%	0%	0%	0%	0%
Congenital cardiac surgery	0%	10%	0%	17%	7%
Other surgical procedures	17%	0%	43%	0%	14%
IABP	0%	0%	0%	0%	0%
ECMO	17%	30%	29%	50%	31%
LVAD	17%	20%	14%	33%	21%
RVAD	0%	0%	14%	0%	3%
TAH	0%	0%	0%	0%	0%
Dialysis	0%	0%	0%	17%	3%
Ultrafiltration	0%	0%	0%	0%	0%
Feeding Tube	0%	60%	14%	50%	34%
Intubation	17%	70%	29%	67%	48%
Major MI	0%	0%	0%	0%	0%
Major infections / Positive blood cultures	0%	20%	29%	17%	17%
Escalation to CPAP	0%	10%	0%	17%	7%
Arrhythmia	17%	30%	57%	17%	31%
Previous ECMO	0%	0%	0%	17%	3%
Previous heart transplant	0%	0%	0%	0%	0%
Treatment of Rejection	0%	10%	0%	0%	3%
Peritoneal Drain	0%	0%	0%	0%	0%
Non-cardiac procedure	0%	20%	0%	33%	14%

**Pedimacs (n=107)**

IMPLANT HOSPITALIZATION EVENTS	2019 Q2	2019 Q3	2019 Q4	2020 Q1	Total
Patients (n)	24	33	27	23	107
None	46%	36%	22%	13%	30%
CABG	0%	0%	0%	0%	0%
Aortic Valve replacement / repair	4%	0%	0%	4%	2%

(Continued)

**COVERAGE: April 1, 2019 - March 31, 2020**

**SITE: Hospital X - (Random 50 Patients)**

**Section 2 - Patients Recieving a Durable Device**

**Exhibit 17: Clinical Events and Interventions during Implant Hospitalization**

Pedimacs (n=107)

IMPLANT HOSPITALIZATION EVENTS	2019 Q2	2019 Q3	2019 Q4	2020 Q1	Total
Mitral Valve replacement / repair	0%	0%	4%	0%	1%
Congenital cardiac surgery	4%	9%	4%	9%	7%
Other surgical procedures	8%	0%	11%	0%	5%
IABP	0%	0%	4%	0%	1%
ECMO	21%	18%	19%	26%	21%
LVAD	17%	12%	15%	13%	14%
RVAD	0%	0%	4%	0%	1%
TAH	0%	0%	0%	0%	0%
Dialysis	0%	0%	0%	17%	4%
Ultrafiltration	0%	0%	0%	4%	1%
Feeding Tube	8%	33%	26%	43%	28%
Intubation	38%	42%	41%	39%	40%
Major MI	0%	0%	0%	0%	0%
Major infections / Positive blood cultures	4%	6%	22%	13%	11%
Escalation to CPAP	0%	9%	7%	13%	7%
Arrhythmia	13%	18%	33%	35%	24%
Previous ECMO	4%	3%	0%	4%	3%
Previous heart transplant	0%	0%	0%	0%	0%
Treatment of Rejection	0%	3%	0%	0%	1%
Peritoneal Drain	0%	0%	0%	0%	0%
Non-cardiac procedure	8%	6%	4%	13%	7%

**COVERAGE: April 1, 2019 - March 31, 2020****SITE: Hospital X - (Random 50 Patients)****Section 2 - Patients Recieving a Durable Device*****Exhibit 18a: Adverse Event Exposure***

The following table summarizes the total time patients receiving primary prospective implants have been followed at your site and STS Pedimacs overall. The total follow-up time is divided into an early period (less than or equal to three months) and late period (more than three months). These totals are the accrued exposure time for each patient group and are used as the denominators in the following rate calculations.

Patient Follow-Up	HOSPX-8888	STS Pedimacs
Patient exposure during the first 3 months post implant (months)	121	259
Patient exposure after the first 3 months post implant (months)	43	99
Number of Patients	58	136

**COVERAGE: April 1, 2019 - March 31, 2020****SITE: Hospital X - (Random 50 Patients)****Section 2 - Patients Recieving a Durable Device****Exhibit 18b: Adverse Event Counts**

The following table includes overall counts and percentages for each type of adverse event reported at your site and STS Pedimacs overall. These totals are based on adverse events reported for primary prospective patients.

Adverse Events	STS Pedimacs	
	Episodes	%
Arterial Non-CNS Thromboembolism	4	0.1 %
Bleeding	380	13.8 %
Cardiac Arrhythmia	86	3.1 %
Device Malfunction	9	0.3 %
Device Malfunction and/or Pump Thrombosis	417	15.2 %
Hepatic Dysfunction	22	0.8 %
Infection	438	16.0 %
Neurological Dysfunction	291	10.6 %
Other Serious Adverse Event	298	10.8 %
Pericardial Drainage	41	1.4 %
Psychiatric Episode	39	1.4 %
Rehospitalization	433	15.8 %
Renal Dysfunction	89	3.2 %
Respiratory Failure	174	6.3 %
Venous Thromboembolism	9	0.3 %
Wound Dehiscence	5	0.1 %
Total Events	2735	100.0 %

**COVERAGE: April 1, 2019 - March 31, 2020**

***SITE: Hospital X - (Random 50 Patients)***

**Section 2 - Patients Receiving a Durable Device**

***Exhibit 18c: Adverse Event Rates***

	STS Pedimacs			
	Early (During the First Three Months)		Late (After the First Three Months)	
	Episodes	Rate (per 100 pt month)	Episodes	Rate (per 100 pt month)
Arterial Non-CNS Thromboembolism	4	1.55		
Bleeding	338	130.7	42	42.24
Cardiac Arrhythmia	73	28.23	13	13.08
Device Malfunction	7	2.71	2	2.01
Device Malfunction and/or Pump Thrombosis	319	123.4	98	98.57
Hepatic Dysfunction	17	6.57	5	5.03
Infection	316	122.2	122	122.7
Neurological Dysfunction	244	94.36	47	47.27
Other Serious Adverse Event	244	94.36	54	54.31
Pericardial Drainage	41	15.86		
Psychiatric Episode	34	13.15	5	5.03
Rehospitalization	99	38.29	334	335.9
Renal Dysfunction	81	31.33	8	8.05
Respiratory Failure	158	61.10	16	16.09
Venous Thromboembolism	9	3.48		
Wound Dehiscence	5	1.93		

**COVERAGE: April 1, 2019 - March 31, 2020****SITE: Hospital X - (Random 50 Patients)****Section 2 - Patients Recieving a Durable Device****Exhibit 18d: Infection Rates by Location**

The following table compares infection rates according to location at your site and STS Pedimacs. Every infection location reported is counted in the table.

	STS Pedimacs			
	Early (During the First Three Months)		Late (After the First Three Months)	
	Episodes	Rate (per 100 pt month)	Episodes	Rate (per 100 pt month)
GI	23	8.89	11	11.06
Line Sepsis	19	7.35	8	8.05
Mediastinum	20	7.73	3	3.02
Other Specify	50	19.34	15	15.09
Peripheral Wound	11	4.25	5	5.03
Positive Blood Cultures	69	26.68	24	24.14
Pulmonary	92	35.58	19	19.11
Pump/Related - Drive Line	25	9.67	35	35.20
Pump/Related - Exit Cannula	10	3.87	6	6.03
Pump/Related - Pump Interior	2	0.77	0	0.00
Pump/Related - Pump Pocket	2	0.77	2	2.01
Unknown	20	7.73	3	3.02
Urinary Tract	34	13.15	10	10.06



**COVERAGE: April 1, 2019 - March 31, 2020**

***SITE: Hospital X - (Random 50 Patients)***

**Section 2 - Patients Recieving a Durable Device**

***Exhibit 19: Hospital Days for Discharged Patients***

This table compares hospital days (initial hospitalization) from implant date to discharge date for patients with submitted discharge forms. For most patients this is the date they were discharged alive on a device but for patients that died or were transplanted in the implantation hospitalization it is the death date or transplant date, respectively. The first section (All) compares overall hospital days. The remaining sections compare hospital days by each device type, LVAD, Bi-VAD and TAH respectively.

HOSPITAL DAYS FOR DISCHARGED PATIENTS		HOSPX-8888 (n=29)	Pedimacs (n=107)
All	Patients	10	24
	Mean	39.10	44.58
	Std	21.13	28.81
	Min	18	18
	Max	91	134
BiVAD	Patients	1	2
	Mean	34.00	43.00
	Std		12.73
	Min	34	34
	Max	34	52
LVAD	Patients	7	19
	Mean	30.71	42.89
	Std	10.52	30.15
	Min	18	18
	Max	47	134
RVAD	Patients	2	3
	Mean	71.00	56.33
	Std	28.28	32.33
	Min	51	27
	Max	91	91

**COVERAGE: April 1, 2019 - March 31, 2020****SITE: Hospital X - (Random 50 Patients)****Section 2 - Patients Recieving a Durable Device****Exhibit 20: 30 Days Readmission**

The following tables present the counts and percentages of patients that were discharged alive on a device that were readmitted within 30 days for your site and for STS Pedimacs overall. Percentages are listed by device type and discharge year.

**HOSPX-8888**

30 DAY REDMISSION		2019 Q3	2019 Q4	2020 Q1	TOTAL
LVAD	Patients Discharged Alive on Device (n)	1	0	4	5
	% With 30 day Readmission	0%		0%	0%
RVAD	Patients Discharged Alive on Device (n)	0	0	0	0
	% With 30 day Readmission				
BiVAD	Patients Discharged Alive on Device (n)	0	0	1	1
	% With 30 day Readmission			0%	0%

**STS Pedimacs**

30 DAY REDMISSION		2019 Q3	2019 Q4	2020 Q1	TOTAL
LVAD	Patients Discharged Alive on Device (n)	5	4	8	17
	% With 30 day Readmission	0%	0%	13%	6%
RVAD	Patients Discharged Alive on Device (n)	1	0	0	1
	% With 30 day Readmission	100%			100%
BiVAD	Patients Discharged Alive on Device (n)	0	0	2	2
	% With 30 day Readmission			50%	50%

**COVERAGE: April 1, 2019 - March 31, 2020**

**SITE: Hospital X - (Random 50 Patients)**

**Section 2 - Patients Recieving a Durable Device**

**Exhibit 21: NYHA Class**

The following tables summarize NYHA completion status and values at your site and Pedimacs at select follow-up visits. Only follow-up data for patients first devices are considered for this summary. Unlikely values have been categorized as outliers and are listed in the accompanying data quality report.

**GROUP=HOSPX-8888**

VISIT	Patients (n)	COMPLETION STATUS				NYHA Class				
		Not Done: Other/Unknown		Complete						
	N	N	%	N	%	Mean	Std	Median	Min	Max
Pre-Implant	29	6	20.7	23	79.3	3.6	0.7	4.0	2.0	4.0
3 Month	10	4	40.0	6	60.0	3.0	0.6	3.0	2.0	4.0
6 Month	1	1	100.0							

**GROUP=STS Pedimacs**

VISIT	Patients (n)	COMPLETION STATUS				NYHA Class				
		Not Done: Other/Unknown		Complete						
	N	N	%	N	%	Mean	Std	Median	Min	Max
Pre-Implant	107	39	36.4	68	63.6	3.5	0.7	4.0	2.0	4.0
3 Month	33	19	57.6	14	42.4	2.8	1.0	3.0	1.0	4.0
6 Month	8	4	50.0	4	50.0	2.8	1.3	3.0	1.0	4.0

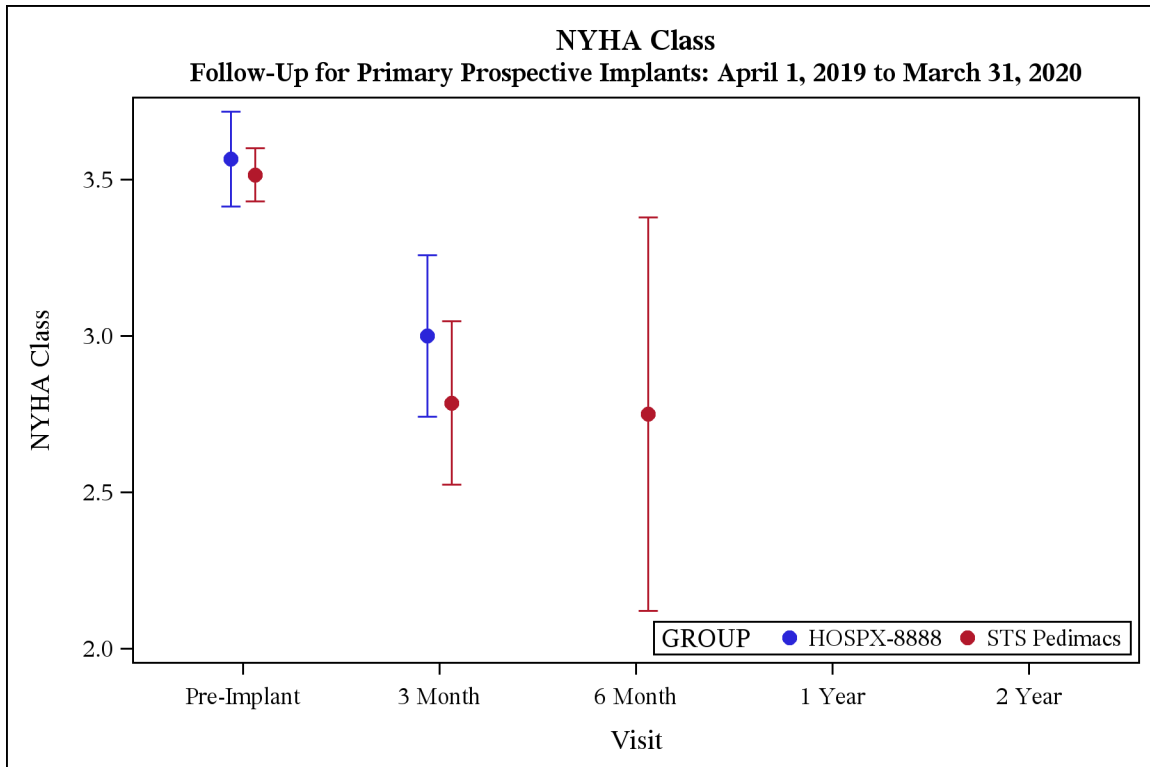
**COVERAGE: April 1, 2019 - March 31, 2020**

**SITE: Hospital X - (Random 50 Patients)**

**Section 2 - Patients Recieving a Durable Device**

**Exhibit 21: NYHA Class**

The following figure summarize NYHA Class values your site and Pedimacs at select follow-up visits. Only follow-up data for patients' first devices are considered for this summary. The dots represent average values and the error bars are the standard errors.



**COVERAGE: April 1, 2019 - March 31, 2020**

***SITE: Hospital X - (Random 50 Patients)***

## ***II.D. Post Implant Outcomes***

This section provides statistical summaries of outcomes after VAD implant. These depictions include all patients who received a primary device at your institution and compares it with the equivalent group in STS Pedimacs. The p-values are a univariate comparison (log-rank test) of survival at your institution with survival for the entire registry. Univariate comparisons are well known to be limited in value because no adjustment is made for differing patient characteristics in the groups.

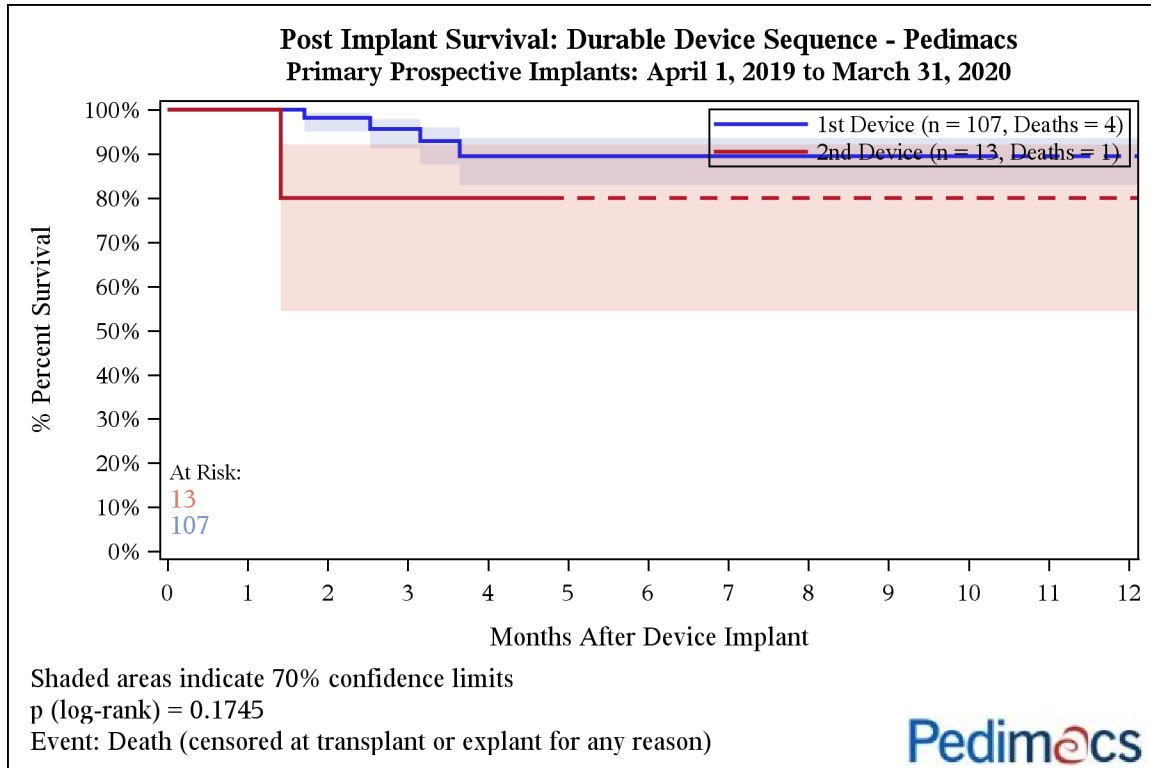
Note: If your site did not report any patients within a specified group, only the overall STS Pedimacs data will be displayed.

COVERAGE: April 1, 2019 - March 31, 2020

SITE: Hospital X - (Random 50 Patients)

**Exhibit 22a: Post Implant Survival - Durable Device Sequence - Pedimacs**

The following figure compares survival time on specific devices based on device sequence for all of STS Intermacs. Each curve represents survival from the time the device was implanted until death. Patients are censored at time of transplant, explant for any reason, or the device was turned off.



**Percent Survival [% (70% CI)]**

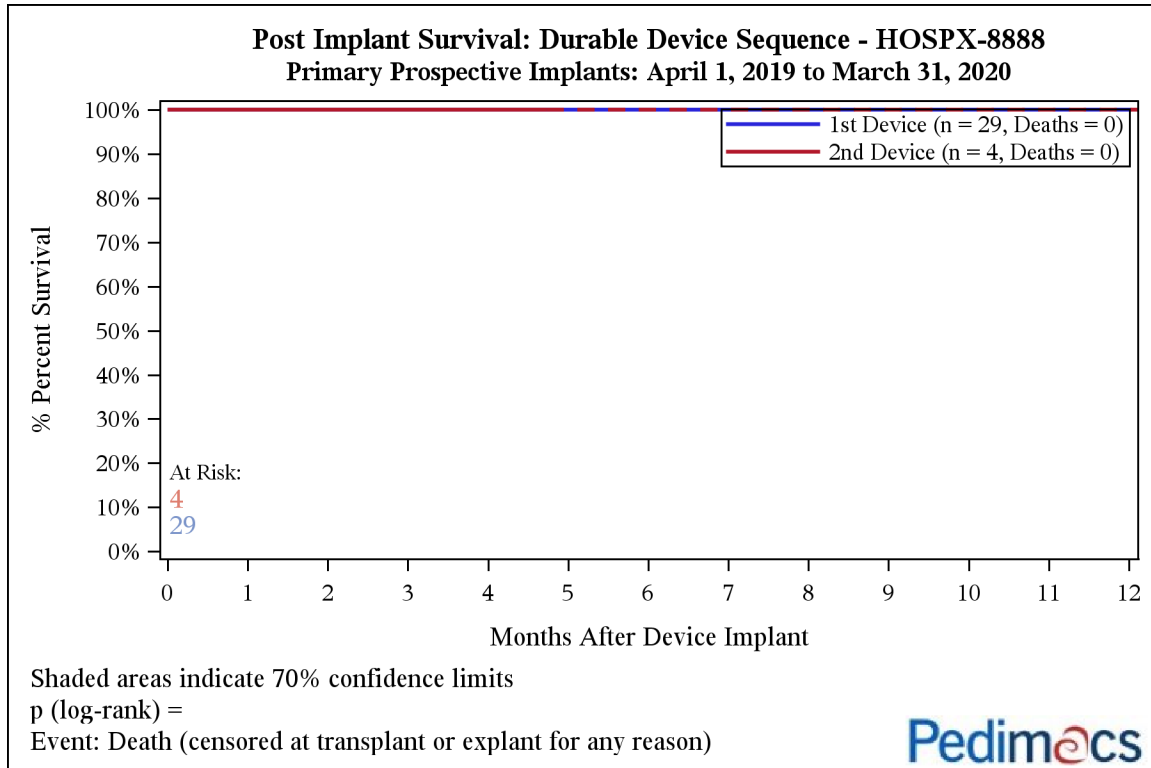
Months after Device Implant	1st Device	2nd Device
1	100.0% (100.0%-100.0%)	100.0% (100.0%-100.0%)
3	95.6% (91.3%-97.8%)	80.0% (54.5%-92.1%)
6	89.5% (83.0%-93.6%)	

COVERAGE: April 1, 2019 - March 31, 2020

SITE: Hospital X - (Random 50 Patients)

**Exhibit 22b: Post Implant Survival - Durable Device Sequence - HOSPX-8888**

The following figure compares survival time on specific devices based on device sequence for your site. Each curve represents survival from the time the device was implanted until death. Patients are censored at transplant, explant for any reason, or the device was turned off.



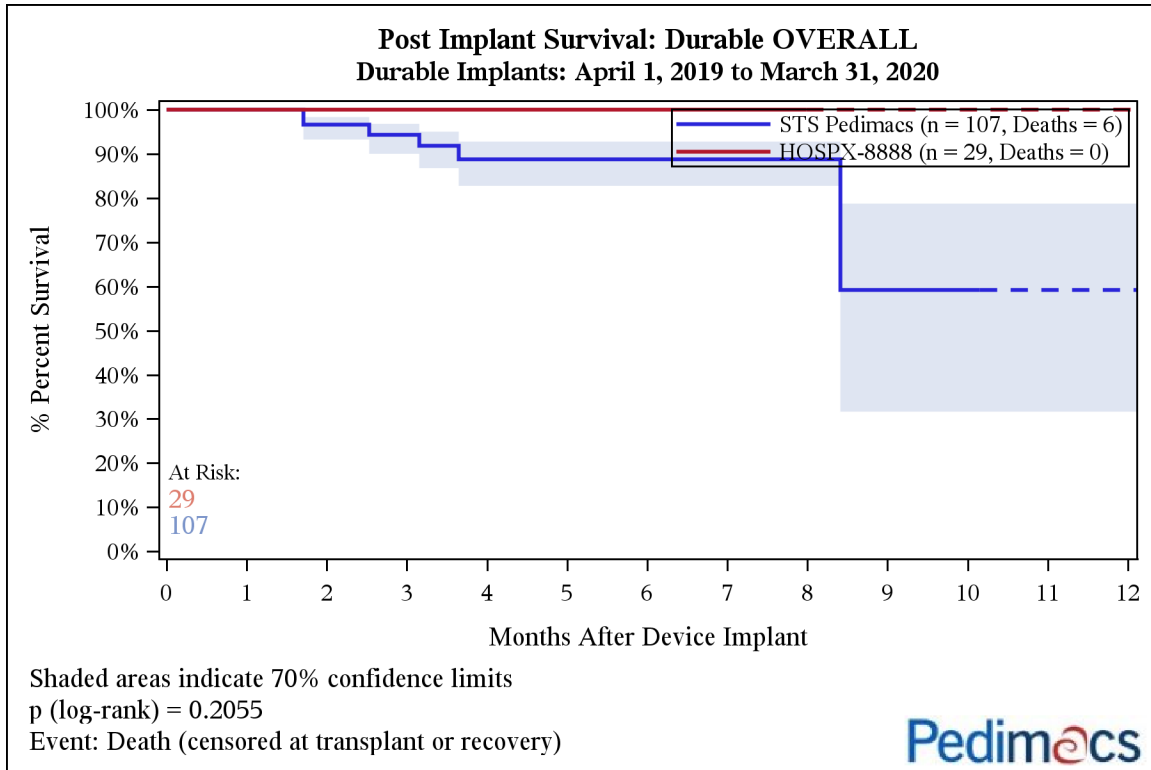
**Percent Survival [% (70% CI)]**

Months after Device Implant	1st Device	2nd Device
1	100.0% (100.0%-100.0%)	100.0% (100.0%-100.0%)
3	100.0% (100.0%-100.0%)	100.0% (100.0%-100.0%)
6	100.0% (100.0%-100.0%)	

COVERAGE: April 1, 2019 - March 31, 2020

SITE: Hospital X - (Random 50 Patients)

**Exhibit 23: Post Implant Survival - Durable OVERALL**



**Percent Survival [% (70% CI)]**

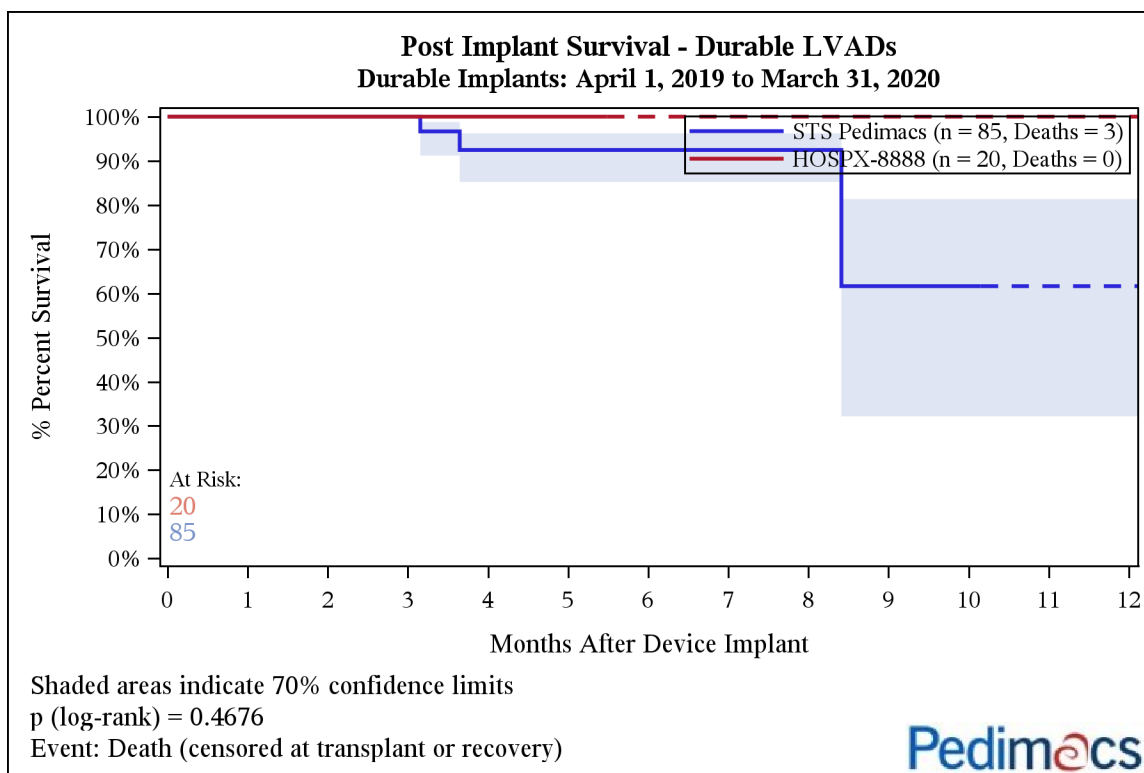
Months after Device Implant	STS Pedimacs	HOSPX-8888
1	100.0% (100.0%-100.0%)	100.0% (100.0%-100.0%)
3	94.3% (90.0%-96.8%)	100.0% (100.0%-100.0%)
6	88.8% (82.8%-92.8%)	100.0% (100.0%-100.0%)



COVERAGE: April 1, 2019 - March 31, 2020

SITE: Hospital X - (Random 50 Patients)

**Exhibit 24: Post Implant Survival - Durable LVADs**



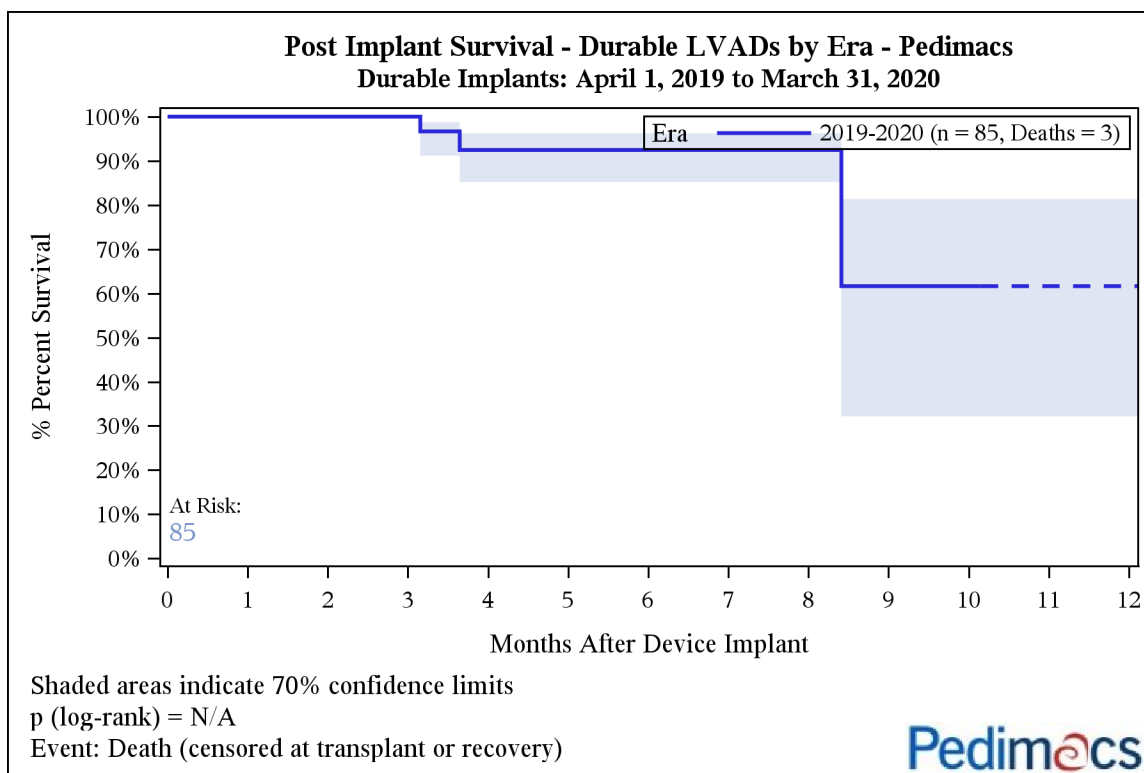
**Percent Survival [% (70% CI)]**

Months after Device Implant	STS Pedimacs	HOSPX-8888
1	100.0% (100.0%-100.0%)	100.0% (100.0%-100.0%)
3	100.0% (100.0%-100.0%)	100.0% (100.0%-100.0%)
6	92.5% (85.2%-96.2%)	

COVERAGE: April 1, 2019 - March 31, 2020

SITE: Hospital X - (Random 50 Patients)

**Exhibit 25a: Post Implant Survival - Durable LVADs by Era - Pedimacs**



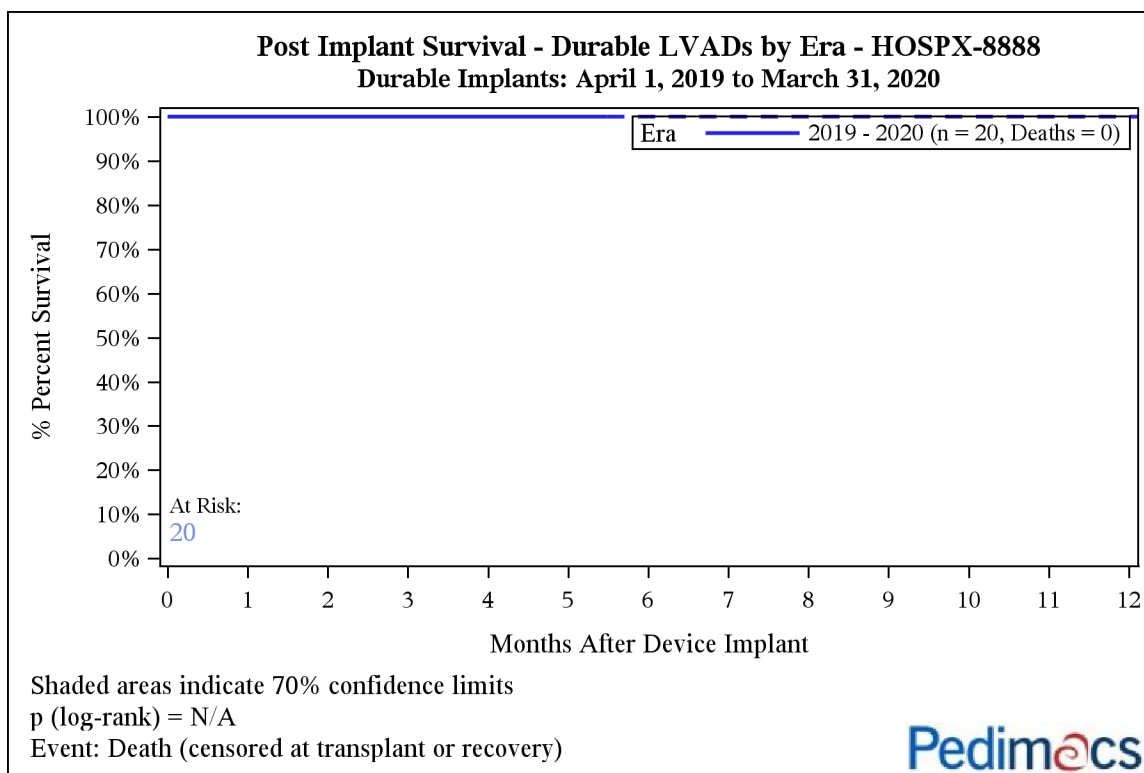
**Percent Survival [% (70% CI)]**

Months after Device Implant	2019-2020
1	100.0% (100.0%-100.0%)
3	100.0% (100.0%-100.0%)
6	92.5% (85.2%-96.2%)

COVERAGE: April 1, 2019 - March 31, 2020

SITE: Hospital X - (Random 50 Patients)

**Exhibit 25b: Post Implant Survival - Durable LVADs by Era - HOSPX-8888**



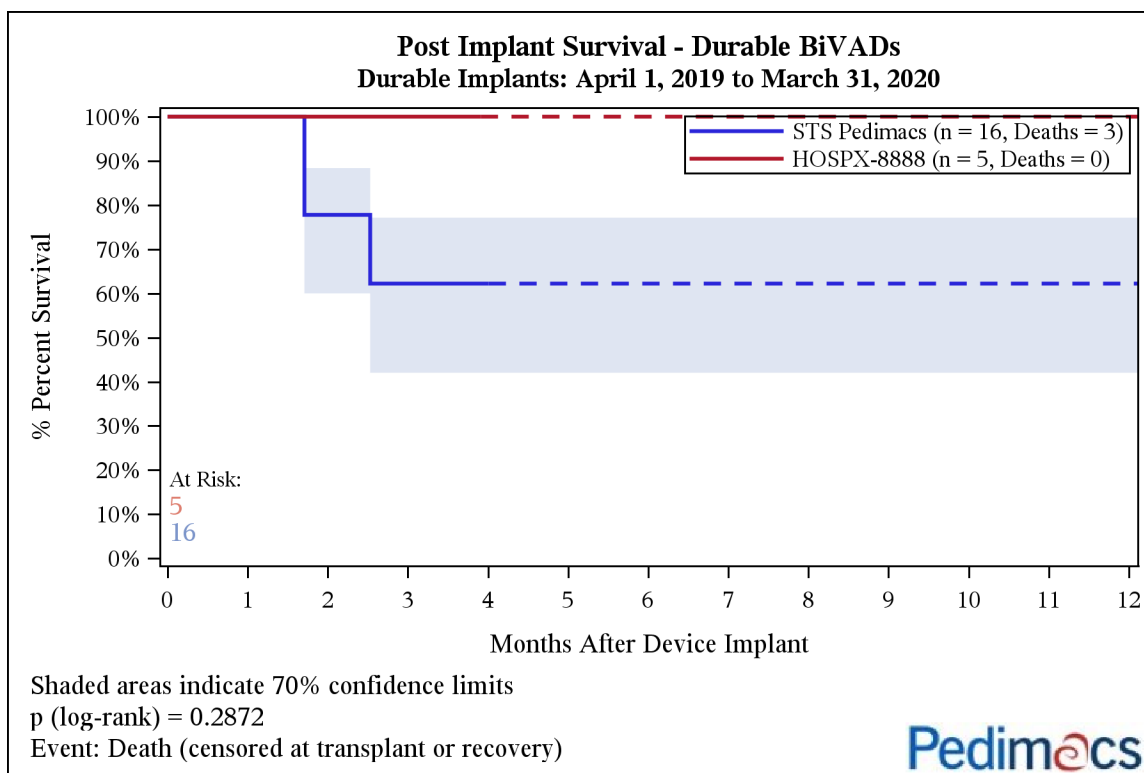
**Percent Survival [% (70% CI)]**

Months after Device Implant	2019 - 2020
1	100.0% (100.0%-100.0%)
3	100.0% (100.0%-100.0%)

COVERAGE: April 1, 2019 - March 31, 2020

SITE: Hospital X - (Random 50 Patients)

**Exhibit 26: Post Implant Survival - Durable BiVADs**



**Percent Survival [% (70% CI)]**

Months after Device Implant	STS Pedimacs	HOSPX-8888
1	100.0% (100.0%-100.0%)	100.0% (100.0%-100.0%)
3	62.2% (42.0%-77.1%)	100.0% (100.0%-100.0%)

**Exhibit 27: Post Implant Survival - Durable TAHs**

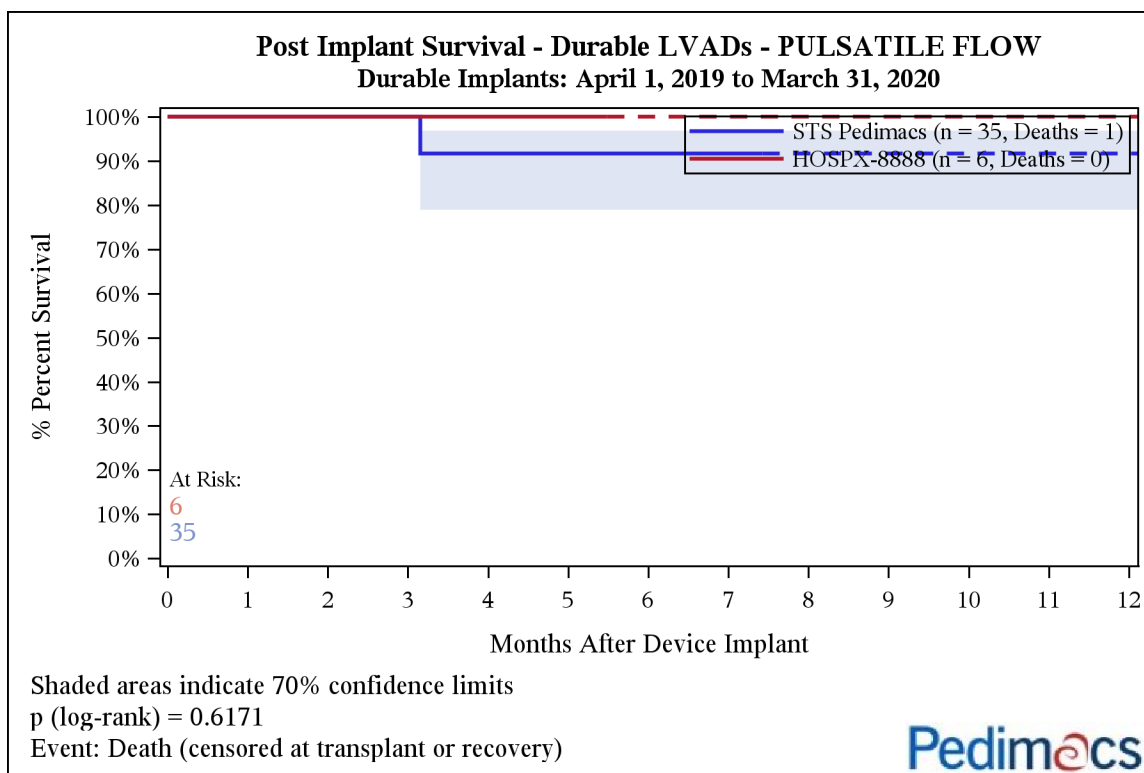
**Percent Survival [% (70% CI)]**

Months after Device Implant

COVERAGE: April 1, 2019 - March 31, 2020

SITE: Hospital X - (Random 50 Patients)

**Exhibit 28: Post Implant Survival - Durable LVADs - PULSATILE FLOW**



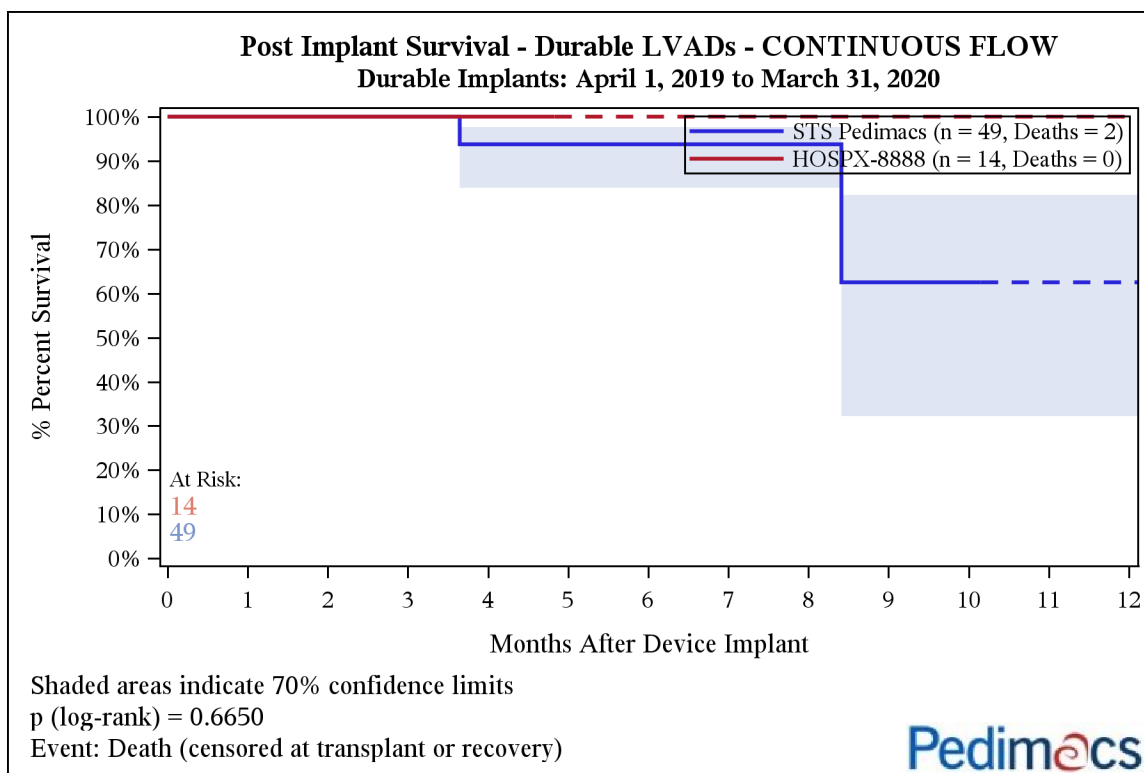
**Percent Survival [% (70% CI)]**

Months after Device Implant	STS Pedimacs	HOSPX-8888
1	100.0% (100.0%-100.0%)	100.0% (100.0%-100.0%)
3	100.0% (100.0%-100.0%)	100.0% (100.0%-100.0%)
6	91.7% (78.9%-96.9%)	

COVERAGE: April 1, 2019 - March 31, 2020

SITE: Hospital X - (Random 50 Patients)

**Exhibit 29: Post Implant Survival - Durable LVADs - CONTINUOUS FLOW**



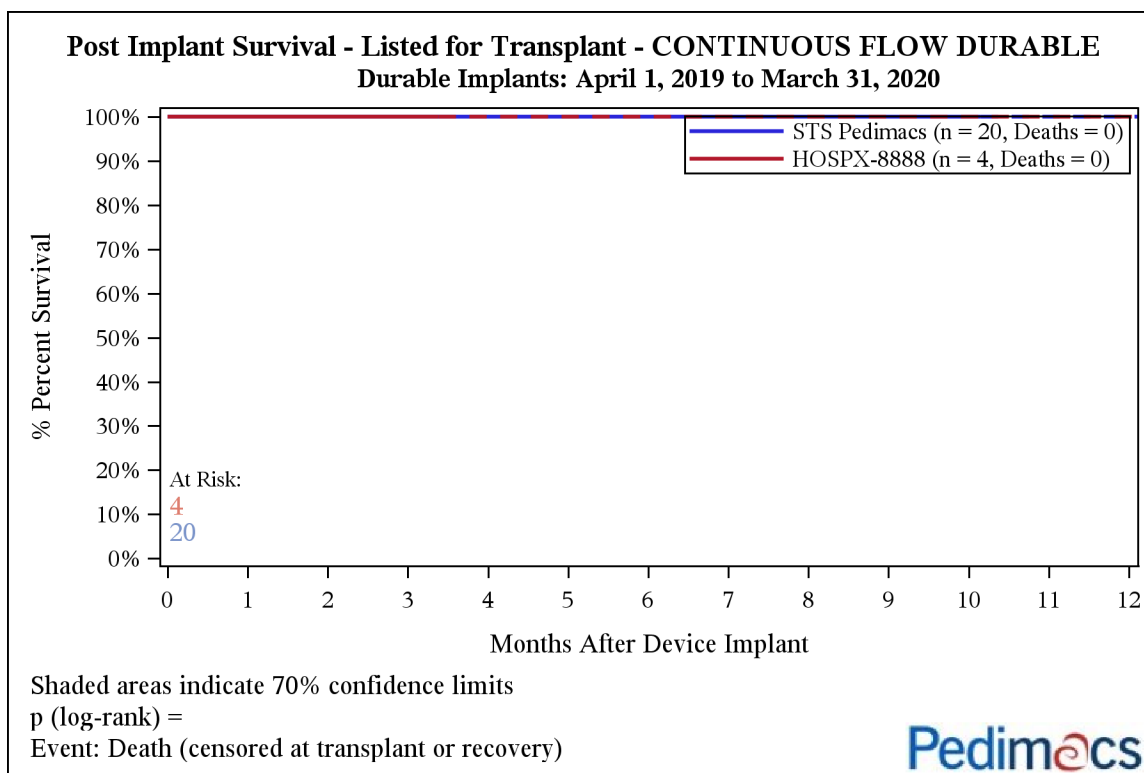
**Percent Survival [% (70% CI)]**

Months after Device Implant	STS Pedimacs	HOSPX-8888
1	100.0% (100.0%-100.0%)	100.0% (100.0%-100.0%)
3	100.0% (100.0%-100.0%)	100.0% (100.0%-100.0%)
6	93.8% (83.9%-97.7%)	

COVERAGE: April 1, 2019 - March 31, 2020

SITE: Hospital X - (Random 50 Patients)

**Exhibit 30: Post Implant Survival - Listed for Transplant - CONTINUOUS FLOW DURABLE**



**Percent Survival [% (70% CI)]**

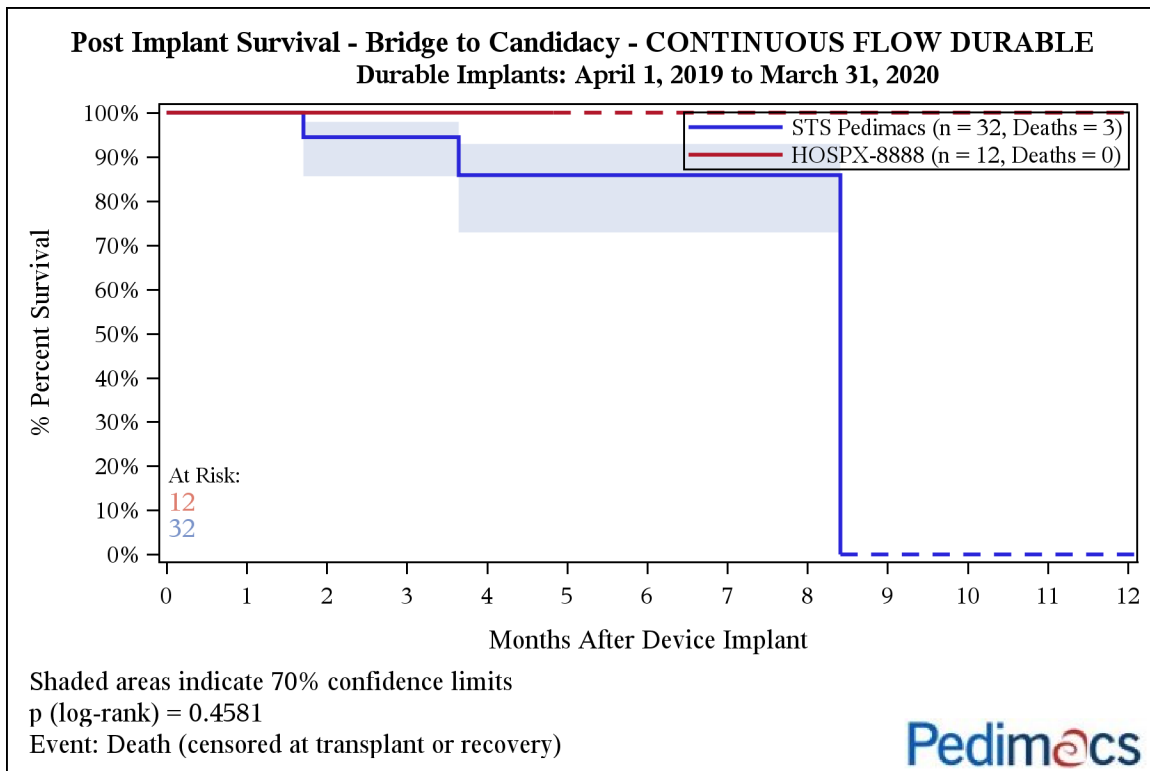
Months after Device Implant	STS Pedimacs	HOSPX-8888
1	100.0% (100.0%-100.0%)	100.0% (100.0%-100.0%)
3	100.0% (100.0%-100.0%)	100.0% (100.0%-100.0%)
6	100.0% (100.0%-100.0%)	



COVERAGE: April 1, 2019 - March 31, 2020

SITE: Hospital X - (Random 50 Patients)

**Exhibit 31: Post Implant Survival - Bridge to Candidacy - CONTINUOUS FLOW DURABLE**

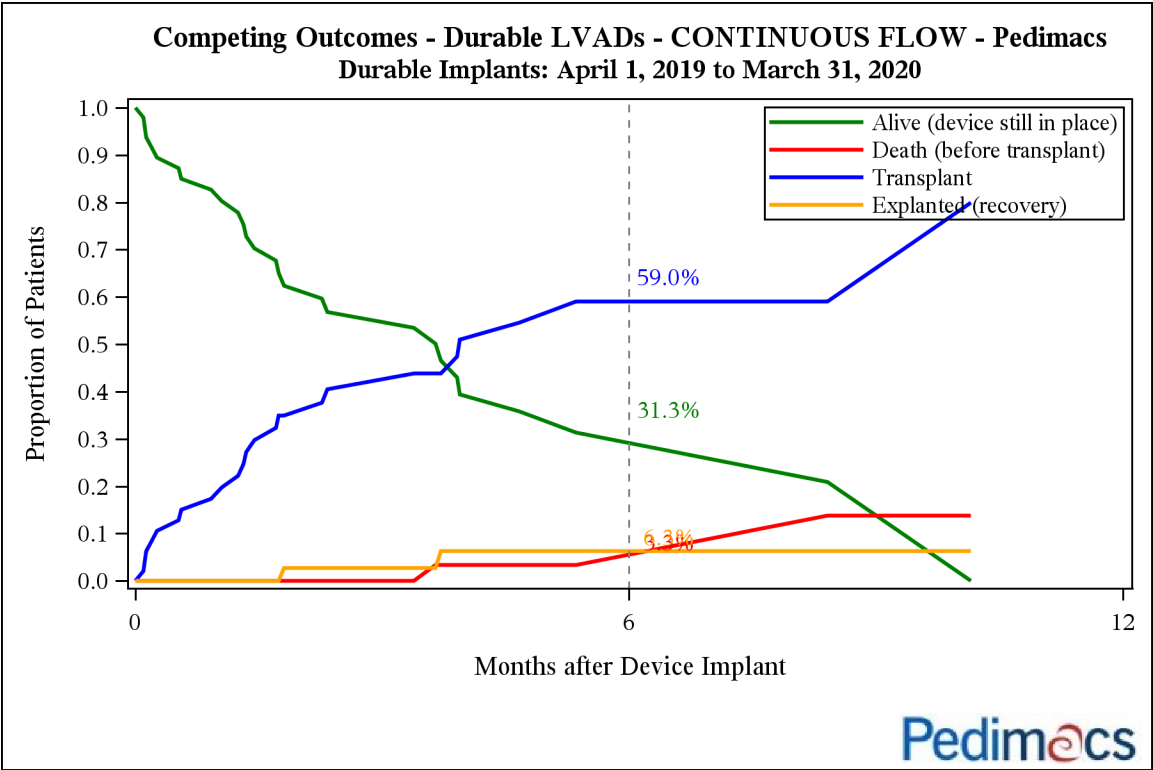


**Percent Survival [% (70% CI)]**

Months after Device Implant	STS Pedimacs	HOSPX-8888
1	100.0% (100.0%-100.0%)	100.0% (100.0%-100.0%)
3	94.4% (85.6%-97.9%)	100.0% (100.0%-100.0%)
6	85.9% (72.9%-92.9%)	

Exhibit 32a: Competing Outcomes - Durable LVADs - CONTINUOUS FLOW - Pedimacs

This figure estimates the simultaneous probability across time of a patient moving from alive (with a device in place) to one of the following terminal events: transplanted, dead, or recovery (due to device removal). This depiction is for all primary LVADs in STS Pedimacs.



Number of Patients at Risk

Month
0
49

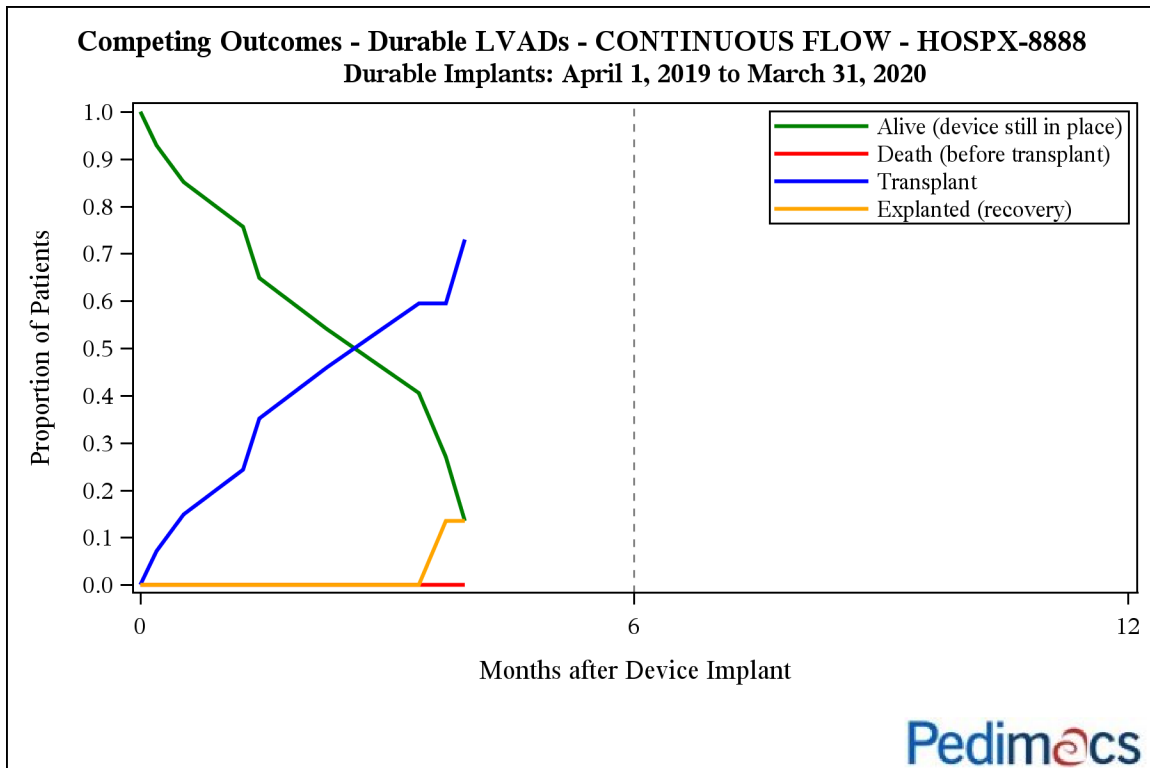
COVERAGE: April 1, 2019 - March 31, 2020

SITE: Hospital X - (Random 50 Patients)

**Exhibit 32b: Competing Outcomes - Durable LVADs - CONTINUOUS FLOW - HOSPX-8888**

This figure estimates the simultaneous probability across time of a patient moving from alive (with a device in place) to one of the following terminal events: transplanted, dead, or recovery (due to device removal). This depiction is for all primary LVADs at your hospital.

Competing outcomes results for sites with low numbers of patients (e.g. < 20) may be extremely jagged and/or suppressed in this display and comparisons with Pedimacs competing outcome results will have limited value.



**Number of Patients at Risk**

Month
0
14

**COVERAGE: April 1, 2019 - March 31, 2020****SITE: Hospital X - (Random 50 Patients)****Section 3 - Patients Receiving only Temporary Devices****Exhibit 1: Primary and Subsequent Device Counts**

The following tables list the number of implants at your site and STS Pedimacs overall by device sequence (primary, secondary, etc.). NOTE: Subsequent analysis in this section evaluate only primary devices unless specified otherwise.

**HOSPX-8888 (n=21)**

DEVICE #	2019 Q2	2019 Q3	2019 Q4	2020 Q1	TOTAL
Primary Device	5	8	3	5	21
2nd Device	0	1	0	1	2
3rd Device	0	0	0	1	1
4th Device	0	0	0	1	1
5th Device	0	0	0	0	0

**Pedimacs (n=62)**

DEVICE #	2019 Q2	2019 Q3	2019 Q4	2020 Q1	TOTAL
Primary Device	18	21	10	13	62
2nd Device	1	1	0	1	3
3rd Device	0	0	0	1	1
4th Device	0	0	0	1	1
5th Device	0	0	0	0	0

**COVERAGE: April 1, 2019 - March 31, 2020**

**SITE: Hospital X - (Random 50 Patients)**

**Section 3 - Patients Receiving only Temporary Devices**

**Exhibit 2: Patient Demographics**

**HOSPX-8888 (n=21)**

DEMOGRAPHICS	2019 Q2	2019 Q3	2019 Q4	2020 Q1	TOTAL
Patients (n)	5	8	3	5	21
<b>Age At Implant - BDV</b>					
< 1 yr	40%	62%	33%	20%	42%
1-5 yr	60%	12%	33%	40%	33%
6-10 yr	0%	12%	0%	0%	4%
11-18 yr	0%	12%	33%	40%	19%
<b>Gender</b>					
Female	40%	62%	66%	60%	57%
Male	60%	37%	33%	40%	42%
<b>*Race*</b>					
African American	20%	25%	0%	40%	23%
White	20%	50%	100%	20%	42%
Other, Unknown, Undisclosed	60%	25%	0%	40%	33%
<b>Ethnicity</b>					
Non-Hispanic	80%	87%	33%	80%	76%
Unknown	20%	12%	0%	20%	14%
Hispanic	0%	0%	66%	0%	9%

**Pedimacs (n=62)**

DEMOGRAPHICS	2019 Q2	2019 Q3	2019 Q4	2020 Q1	TOTAL
Patients (n)	18	21	10	13	62
<b>Age At Implant - BDV</b>					
< 1 yr	50%	61%	20%	38%	46%
1-5 yr	33%	23%	30%	23%	27%
6-10 yr	11%	4%	20%	0%	8%
11-18 yr	5%	9%	30%	38%	17%
<b>Gender</b>					
Female	27%	52%	70%	53%	48%
Male	72%	47%	30%	46%	51%
<b>*Race*</b>					
African American	11%	28%	20%	46%	25%
White	55%	57%	50%	23%	48%
Other, Unknown, Undisclosed	33%	14%	30%	30%	25%

(Continued)

**COVERAGE: April 1, 2019 - March 31, 2020**

***SITE: Hospital X - (Random 50 Patients)***

**Section 3 - Patients Receiving only Temporary Devices**

***Exhibit 2: Patient Demographics***

**Pedimacs (n=62)**

DEMOGRAPHICS	2019 Q2	2019 Q3	2019 Q4	2020 Q1	TOTAL
<b>Ethnicity</b>					
<b>Non-Hispanic</b>	77%	80%	80%	84%	<b>80%</b>
<b>Unknown</b>	5%	4%	0%	7%	<b>4%</b>
<b>Hispanic</b>	16%	14%	20%	7%	<b>14%</b>

**COVERAGE: April 1, 2019 - March 31, 2020**

**SITE: Hospital X - (Random 50 Patients)**

**Section 3 - Patients Recieving only Temporary Devices**

**Exhibit 3: Weight (kg)**

**HOSPX-8888 (n=21)**

	2019 Q2	2019 Q3	2019 Q4	2020 Q1	TOTAL
<b>Patients (n)</b>	5	8	3	5	21
<b>Weight (kg)</b>					
<b>&lt; 5 kg</b>	0%	62%	33%	0%	28%
<b>5-20 kg</b>	100%	12%	33%	60%	47%
<b>&gt; 20 Kg</b>	0%	25%	33%	40%	23%

**Pedimacs (n=62)**

	2019 Q2	2019 Q3	2019 Q4	2020 Q1	TOTAL
<b>Patients (n)</b>	18	21	10	13	62
<b>Weight (kg)</b>					
<b>&lt; 5 kg</b>	22%	47%	20%	15%	29%
<b>5-20 kg</b>	66%	38%	40%	46%	48%
<b>&gt; 20 Kg</b>	11%	14%	40%	38%	22%

**COVERAGE: April 1, 2019 - March 31, 2020**

**SITE: Hospital X - (Random 50 Patients)**

**Section 3 - Patients Receiving only Temporary Devices**

**Exhibit 4: Primary Diagnosis**

**HOSPX-8888 (n=21)**

	2019 Q2	2019 Q3	2019 Q4	2020 Q1	TOTAL
<b>Patients (n)</b>	<b>5</b>	<b>8</b>	<b>3</b>	<b>5</b>	<b>21</b>
<b>Primary Diagnosis</b>					
<i>Congenital Heart Disease – Biventricular</i>	0%	0%	0%	20%	<b>4%</b>
<i>Congenital Heart Disease – Single Ventricle</i>	40%	37%	0%	20%	<b>28%</b>
<i>Dilated Cardiomyopathy</i>	40%	62%	66%	40%	<b>52%</b>
<i>Post Transplant/Graft Dysfunction</i>	0%	0%	33%	0%	<b>4%</b>
<b>#None#</b>	0%	0%	0%	0%	<b>0%</b>
<i>Other</i>	20%	0%	0%	20%	<b>9%</b>

**Pedimacs (n=62)**

	2019 Q2	2019 Q3	2019 Q4	2020 Q1	TOTAL
<b>Patients (n)</b>	<b>18</b>	<b>21</b>	<b>10</b>	<b>13</b>	<b>62</b>
<b>Primary Diagnosis</b>					
<i>Congenital Heart Disease – Biventricular</i>	5%	4%	10%	7%	<b>6%</b>
<i>Congenital Heart Disease – Single Ventricle</i>	44%	52%	20%	7%	<b>35%</b>
<i>Dilated Cardiomyopathy</i>	38%	38%	50%	61%	<b>45%</b>
<i>Post Transplant/Graft Dysfunction</i>	0%	0%	10%	0%	<b>1%</b>
<b>#None#</b>	0%	4%	0%	0%	<b>1%</b>
<i>Other</i>	11%	0%	10%	23%	<b>9%</b>



**COVERAGE: April 1, 2019 - March 31, 2020**

***SITE: Hospital X - (Random 50 Patients)***

**Section 3 - Patients Receiving only Temporary Devices**

***Exhibit 5: Patient Profile Levels***

**HOSPX-8888 (n=21)**

	2019 Q2	2019 Q3	2019 Q4	2020 Q1	TOTAL
<b>Patients (n)</b>	<b>5</b>	<b>8</b>	<b>3</b>	<b>5</b>	<b>21</b>
<b>Patient Profile</b>					
<b>1 Critical Cardiogenic Shock</b>	40%	75%	33%	60%	<b>57%</b>
<b>2 Progressive Decline</b>	60%	12%	66%	40%	<b>38%</b>
<b>3 Stable but Inotrope Dependent</b>	0%	12%	0%	0%	<b>4%</b>
<b>4 Resting Symptoms</b>	0%	0%	0%	0%	<b>0%</b>

**Pedimacs (n=62)**

	2019 Q2	2019 Q3	2019 Q4	2020 Q1	TOTAL
<b>Patients (n)</b>	<b>18</b>	<b>21</b>	<b>10</b>	<b>13</b>	<b>62</b>
<b>Patient Profile</b>					
<b>1 Critical Cardiogenic Shock</b>	38%	71%	70%	53%	<b>58%</b>
<b>2 Progressive Decline</b>	50%	23%	20%	46%	<b>35%</b>
<b>3 Stable but Inotrope Dependent</b>	11%	4%	0%	0%	<b>4%</b>
<b>4 Resting Symptoms</b>	0%	0%	10%	0%	<b>1%</b>

**COVERAGE: April 1, 2019 - March 31, 2020**

**SITE: Hospital X - (Random 50 Patients)**

**Section 3 - Patients Receiving only Temporary Devices**

**Exhibit 6: Device Strategy**

**HOSPX-8888 (n=21)**

	2019 Q2	2019 Q3	2019 Q4	2020 Q1	TOTAL
Patients (n)	5	8	3	5	21
<b>Current Device Strategy</b>					
Bridge to Recovery	40%	12%	0%	40%	23%
Bridge to Transplant (patient currently listed for transplant)	20%	12%	33%	20%	19%
Possible Bridge to Transplant - Likely to be eligible	20%	37%	33%	0%	23%
Possible Bridge to Transplant - Moderate likelihood of becoming eligible	0%	12%	0%	20%	9%
Possible Bridge to Transplant - Unlikely to become eligible	0%	0%	0%	0%	0%
Destination Therapy (patient definitely not eligible for transplant)	0%	0%	0%	0%	0%
Rescue Therapy	20%	25%	33%	20%	23%

**Pedimacs (n=62)**

	2019 Q2	2019 Q3	2019 Q4	2020 Q1	TOTAL
Patients (n)	18	21	10	13	62
<b>Current Device Strategy</b>					
Bridge to Recovery	27%	4%	30%	23%	19%
Bridge to Transplant (patient currently listed for transplant)	33%	28%	20%	23%	27%
Possible Bridge to Transplant - Likely to be eligible	27%	28%	10%	7%	20%
Possible Bridge to Transplant - Moderate likelihood of becoming eligible	5%	14%	10%	15%	11%
Possible Bridge to Transplant - Unlikely to become eligible	0%	4%	0%	0%	1%
Destination Therapy (patient definitely not eligible for transplant)	0%	0%	0%	7%	1%
Rescue Therapy	5%	19%	30%	23%	17%

**COVERAGE: April 1, 2019 - March 31, 2020****SITE: Hospital X - (Random 50 Patients)****Section 3 - Patients Receiving only Temporary Devices****Exhibit 7: Medications****HOSPX-8888 (n=21)**

MEDICATIONS	2019 Q2	2019 Q3	2019 Q4	2020 Q1	Total
Patients (n)	5	8	3	5	21
IV Inotropes at Implant	100%	100%	100%	100%	100%
Pre-implant Loop Diuretics	60%	75%	67%	80%	71%

**Pedimacs (n=62)**

MEDICATIONS	2019 Q2	2019 Q3	2019 Q4	2020 Q1	Total
Patients (n)	18	21	10	13	62
IV Inotropes at Implant	100%	100%	90%	100%	98%
Pre-implant Loop Diuretics	72%	71%	50%	69%	68%

**COVERAGE: April 1, 2019 - March 31, 2020**

**SITE: Hospital X - (Random 50 Patients)**

**Section 3 - Patients Receiving only Temporary Devices**

**Exhibit 8: Laboratories**

**HOSPX-8888 (n=21)**

PRE-IMPLANT LABORATORIES		2019 Q2	2019 Q3	2019 Q4	2020 Q1	TOTAL
Patients	n	5	8	3	5	21
Sodium (mEq/L)	Mean	140.60	140.38	138.00	141.80	140.43
	Std	3.13	5.13	1.73	4.09	4.02
	Missing	0	0	0	0	0
Potassium (mEq/L)	Mean	4.06	3.85	4.00	3.86	3.92
	Std	0.80	0.40	0.87	0.48	0.56
	Missing	0	0	0	0	0
BUN (mg/dL)	Mean	32.20	22.25	34.33	24.87	26.97
	Std	24.44	9.07	14.22	13.68	15.19
	Missing	0	0	0	0	0
Creatinine (mg/dL)	Mean	0.49	0.76	0.67	0.56	0.64
	Std	0.37	0.91	0.26	0.34	0.60
	Missing	0	0	0	0	0
Alanine Aminotransferase/ALT (u/L)	Mean	21.75	53.71	60.33	133.40	69.00
	Std	8.18	24.40	66.38	108.09	71.04
	Missing	1	1	0	0	2
Aspartate Aminotransferase/AST (u/L)	Mean	40.75	93.14	64.33	455.00	172.79
	Std	13.99	57.84	58.02	456.03	279.57
	Missing	1	1	0	0	2
LDH (ukat/L) , (U/L)	Mean	802.25	1079.25	1093.00	3627.00	1443.00
	Std	441.08	725.72		3973.94	1725.97
	Missing	1	4	2	3	10
Total Bilirubin (mg/dL)	Mean	0.88	1.23	0.73	0.86	0.97
	Std	0.38	0.82	0.84	0.44	0.63
	Missing	1	2	0	1	4
Albumin (g/dL)	Mean	3.28	3.10	3.57	3.40	3.28
	Std	0.79	0.51	0.46	0.42	0.55
	Missing	0	0	0	1	1
Pre-albumin (mg/dL)	Mean	23.10		9.20	12.90	14.53
	Std				3.54	6.32
	Missing	4	8	2	3	17

(Continued)

**COVERAGE: April 1, 2019 - March 31, 2020**

**SITE: Hospital X - (Random 50 Patients)**

**Section 3 - Patients Receiving only Temporary Devices**

**Exhibit 8: Laboratories**

**HOSPX-8888 (n=21)**

PRE-IMPLANT LABORATORIES		2019 Q2	2019 Q3	2019 Q4	2020 Q1	TOTAL
Total Cholesterol (mg/dL)	Mean			119.00		119.00
	Std					
	Missing	5	8	2	5	20
Brain Natriuretic Peptide (pg/mL)	Mean	250.00	2824.00	2183.00	1157.00	1943.43
	Std		3077.33	892.12		1646.76
	Missing	4	6	0	4	14
Pro Brain Natriuretic Peptide (pg/mL)	Mean	47903.00	35220.50		9472.00	27457.60
	Std		5029.65		8860.05	17953.42
	Missing	4	6	3	3	16
White Blood Cell Count (x10 <sup>3</sup> /uL)	Mean	10.44	9.32	9.46	16.08	11.21
	Std	3.44	4.32	5.22	6.92	5.40
	Missing	0	0	0	0	0
Hemoglobin (g/dL)	Mean	10.66	11.99	11.20	10.82	11.28
	Std	1.17	1.54	2.75	0.76	1.52
	Missing	0	0	0	0	0
Platelets (x10 <sup>3</sup> /uL)	Mean	236.60	102.13	365.33	261.80	209.76
	Std	141.50	43.51	164.20	171.84	149.64
	Missing	0	0	0	0	0
INR	Mean	2.22	1.30	1.27	1.20	1.50
	Std	2.34	0.14	0.06	0.25	1.16
	Missing	0	1	0	0	1

**Pedimacs (n=62)**

PRE-IMPLANT LABORATORIES		2019 Q2	2019 Q3	2019 Q4	2020 Q1	TOTAL
Patients	n	18	21	10	13	62
Sodium (mEq/L)	Mean	137.94	141.00	138.00	141.54	139.74
	Std	5.84	5.83	3.46	4.65	5.42
	Missing	0	0	0	0	0
Potassium (mEq/L)	Mean	3.94	4.08	3.91	4.06	4.01
	Std	0.53	0.95	0.65	0.63	0.72
	Missing	0	0	0	0	0

(Continued)

**COVERAGE: April 1, 2019 - March 31, 2020**

**SITE: Hospital X - (Random 50 Patients)**

**Section 3 - Patients Receiving only Temporary Devices**

**Exhibit 8: Laboratories**

Pedimacs (n=62)

PRE-IMPLANT LABORATORIES		2019 Q2	2019 Q3	2019 Q4	2020 Q1	TOTAL
BUN (mg/dL)	Mean	26.17	27.96	23.66	26.63	26.46
	Std	17.88	17.94	11.99	15.17	16.24
	Missing	0	0	0	1	1
Creatinine (mg/dL)	Mean	0.49	0.58	0.48	0.55	0.53
	Std	0.25	0.64	0.21	0.28	0.42
	Missing	0	0	0	1	1
Alanine Aminotransferase/ALT (u/L)	Mean	144.88	157.22	116.20	114.92	136.91
	Std	427.40	362.73	199.16	119.21	314.06
	Missing	2	3	0	0	5
Aspartate Aminotransferase/AST (u/L)	Mean	208.25	212.67	222.44	284.69	229.70
	Std	582.08	521.66	276.44	346.83	463.50
	Missing	2	3	1	0	6
LDH (ukat/L) , (U/L)	Mean	844.25	880.30	1047.67	2951.00	1211.36
	Std	828.91	706.34	499.71	2628.47	1357.13
	Missing	6	11	4	8	29
Total Bilirubin (mg/dL)	Mean	3.16	1.77	4.09	2.57	2.73
	Std	7.03	2.75	8.24	5.47	5.73
	Missing	2	4	2	3	11
Albumin (g/dL)	Mean	3.27	3.01	3.25	3.19	3.16
	Std	0.67	0.48	0.83	0.41	0.60
	Missing	0	0	0	2	2
Pre-albumin (mg/dL)	Mean	23.10		9.20	14.00	14.86
	Std				3.14	5.52
	Missing	17	21	9	10	57
Total Cholesterol (mg/dL)	Mean	99.50	128.00	119.00		111.50
	Std	31.82				23.30
	Missing	16	20	9	13	58
Brain Natriuretic Peptide (pg/mL)	Mean	731.20	2389.57	1645.71	2511.00	1852.42
	Std	897.21	2042.51	1219.84	2234.94	1718.59
	Missing	13	14	3	8	38

(Continued)

**COVERAGE: April 1, 2019 - March 31, 2020**

**SITE: Hospital X - (Random 50 Patients)**

**Section 3 - Patients Receiving only Temporary Devices**

**Exhibit 8: Laboratories**

**Pedimacs (n=62)**

PRE-IMPLANT LABORATORIES		2019 Q2	2019 Q3	2019 Q4	2020 Q1	TOTAL
Pro Brain Natriuretic Peptide (pg/mL)	Mean	17610.13	35771.80	14334.00	26314.67	24295.18
	Std	18227.93	21192.48		29837.50	20961.85
	Missing	10	16	9	10	45
White Blood Cell Count (x10 <sup>3</sup> /uL)	Mean	12.35	9.60	10.29	14.26	11.49
	Std	6.46	3.80	3.53	7.14	5.62
	Missing	0	0	0	0	0
Hemoglobin (g/dL)	Mean	11.81	11.71	11.78	11.36	11.68
	Std	2.61	3.18	2.61	2.30	2.70
	Missing	0	0	0	0	0
Platelets (x10 <sup>3</sup> /uL)	Mean	238.78	181.76	188.70	218.54	207.15
	Std	184.02	161.16	156.23	145.95	162.31
	Missing	0	0	0	0	0
INR	Mean	1.59	1.47	1.32	1.32	1.45
	Std	1.22	0.39	0.39	0.37	0.75
	Missing	0	3	0	2	5

**COVERAGE: April 1, 2019 - March 31, 2020**

**SITE: Hospital X - (Random 50 Patients)**

**Section 3 - Patients Receiving only Temporary Devices**

**Exhibit 8: Laboratories**

**HOSPX-8888 (n=21)**

	2019 Q2	2019 Q3	2019 Q4	2020 Q1	TOTAL
<b>Patients (n)</b>	<b>5</b>	<b>8</b>	<b>3</b>	<b>5</b>	<b>21</b>
<b>Lupus Anticoagulant</b>					
<b>Negative</b>	0%	0%	0%	0%	<b>0%</b>
<b>Unknown</b>	100%	100%	100%	100%	<b>100%</b>

**Pedimacs (n=62)**

	2019 Q2	2019 Q3	2019 Q4	2020 Q1	TOTAL
<b>Patients (n)</b>	<b>18</b>	<b>21</b>	<b>10</b>	<b>13</b>	<b>62</b>
<b>Lupus Anticoagulant</b>					
<b>Negative</b>	5%	0%	0%	0%	<b>1%</b>
<b>Unknown</b>	94%	100%	100%	100%	<b>98%</b>



**COVERAGE: April 1, 2019 - March 31, 2020**

**SITE: Hospital X - (Random 50 Patients)**

**Section 3 - Patients Receiving only Temporary Devices**

**Exhibit 9: Pre-Implant Concerns**

**HOSPX-8888 (n=21)**

PRE-IMPLANT CONCERNS	2019 Q2	2019 Q3	2019 Q4	2020 Q1	Total
Patients (n)	5	8	3	5	21
Concern: Patient Does Not Want Transplant	0%	0%	0%	0%	0%
Concern: Musculoskeletal Limitation	0%	0%	0%	0%	0%
Concern: Contraindications to Immunosuppression	0%	0%	0%	0%	0%
Concern: Allosensitization	0%	0%	0%	0%	0%
Concern: Frailty	0%	13%	0%	0%	5%
Concern: Chronic Renal Disease	0%	0%	0%	0%	0%
Concern: Frequent ICD Shocks	0%	0%	0%	0%	0%
Concern: Pulmonary Disease	0%	0%	0%	0%	0%
Concern: Pulmonary Hypertension	0%	0%	0%	0%	0%
Concern: Recent Pulmonary Embolus	0%	0%	0%	0%	0%
Concern: History Atrial Arrhythmia	0%	0%	0%	0%	0%
Concern: Unfavorable Mediastinal Anatomy	0%	0%	33%	0%	5%
Concern: Thoracic Aortic Disease	20%	0%	0%	0%	5%
Concern: Tracheotomy	0%	0%	0%	0%	0%
Concern: Plastic Bronchitis	0%	0%	0%	0%	0%
Concern: Large BMI	0%	0%	33%	0%	5%
Concern: Severe Diabetes	0%	0%	0%	0%	0%
Concern: Malnutrition/Cachexia	0%	0%	0%	0%	0%
Concern: History GI Ulcers	0%	0%	0%	0%	0%
Concern: History Hepatitis	0%	0%	0%	0%	0%
Concern: Liver Dysfunction	0%	0%	0%	0%	0%
Concern: Anasarca	0%	0%	0%	0%	0%
Concern: Protein Losing Enteropathy	0%	0%	0%	0%	0%
Concern: Genetic Syndrome	0%	0%	0%	0%	0%
Concern: Heparin Induced Thrombosis	0%	0%	0%	0%	0%
Concern: Chronic Coagulopathy		0%			0%
Concern: Major Stroke	0%	13%	0%	0%	5%
Concern: Other Cerebrovascular Disease	0%	0%	0%	0%	0%
Concern: Peripheral Vascular Disease	0%	0%	0%	0%	0%
Concern: History Solid Organ Cancer	0%	0%	0%	0%	0%
Concern: History Lymphoma Leukemia	0%	0%	0%	0%	0%
Concern: History Bone Marrow Transplant	0%	0%	0%	0%	0%

**(Continued)**

**COVERAGE: April 1, 2019 - March 31, 2020**

**SITE: Hospital X - (Random 50 Patients)**

**Section 3 - Patients Receiving only Temporary Devices**

**Exhibit 9: Pre-Implant Concerns**

**HOSPX-8888 (n=21)**

PRE-IMPLANT CONCERNS	2019 Q2	2019 Q3	2019 Q4	2020 Q1	Total
Concern: History HIV	0%	0%	0%	0%	0%
Concern: Chronic Infectious Concerns	0%	0%	0%	0%	0%
Concern: Limited Cognitive Understanding	0%	0%	0%	0%	0%
Concern: Limited Social Support	0%	0%	33%	0%	5%
Concern: Repeated Non Compliance	0%	0%	33%	0%	5%
Concern: History Drug Use	0%	0%	0%	0%	0%
Concern: History Alcohol Abuse	0%	0%	0%	0%	0%
Concern: Narcotic Dependence	0%	0%	0%	0%	0%
Concern: History Smoking	0%	0%	0%	0%	0%
Concern: Currently Smoking	0%	0%	0%	0%	0%
Concern: Severe Depression	0%	0%	0%	0%	0%
Concern: Other Major Psychological Diagnosis	0%	0%	0%	0%	0%
Concern: Neuro Abnormal	0%	0%	0%	0%	0%
Concern: Other Co-Morbidity	0%	0%	0%	0%	0%

**Pedimacs (n=62)**

PRE-IMPLANT CONCERNS	2019 Q2	2019 Q3	2019 Q4	2020 Q1	Total
Patients (n)	18	21	10	13	62
Concern: Patient Does Not Want Transplant	0%	0%	0%	0%	0%
Concern: Musculoskeletal Limitation	0%	0%	0%	0%	0%
Concern: Contraindications to Immunosuppression	0%	0%	0%	0%	0%
Concern: Allosensitization	0%	0%	0%	0%	0%
Concern: Frailty	0%	10%	0%	8%	5%
Concern: Chronic Renal Disease	0%	0%	0%	8%	2%
Concern: Frequent ICD Shocks	0%	0%	0%	0%	0%
Concern: Pulmonary Disease	6%	5%	10%	0%	5%
Concern: Pulmonary Hypertension	0%	0%	10%	0%	2%
Concern: Recent Pulmonary Embolus	0%	0%	0%	0%	0%
Concern: History Atrial Arrhythmia	0%	0%	0%	8%	2%
Concern: Unfavorable Mediastinal Anatomy	17%	5%	20%	0%	10%
Concern: Thoracic Aortic Disease	6%	0%	0%	0%	2%
Concern: Tracheotomy	0%	0%	0%	0%	0%
Concern: Plastic Bronchitis	0%	0%	0%	0%	0%

**(Continued)**

**COVERAGE: April 1, 2019 - March 31, 2020**

**SITE: Hospital X - (Random 50 Patients)**

**Section 3 - Patients Receiving only Temporary Devices**

**Exhibit 9: Pre-Implant Concerns**

**Pedimacs (n=62)**

PRE-IMPLANT CONCERNS	2019 Q2	2019 Q3	2019 Q4	2020 Q1	Total
Concern: Large BMI	0%	5%	10%	0%	3%
Concern: Severe Diabetes	0%	0%	0%	0%	0%
Concern: Malnutrition/Cachexia	0%	0%	0%	0%	0%
Concern: History GI Ulcers	0%	0%	0%	0%	0%
Concern: History Hepatitis	0%	0%	0%	0%	0%
Concern: Liver Dysfunction	0%	5%	0%	0%	2%
Concern: Anasarca	0%	0%	0%	0%	0%
Concern: Protein Losing Enteropathy	0%	0%	0%	0%	0%
Concern: Genetic Syndrome	6%	5%	0%	0%	3%
Concern: Heparin Induced Thrombosis	0%	0%	0%	0%	0%
Concern: Chronic Coagulopathy	33%	0%	0%	0%	9%
Concern: Major Stroke	17%	10%	0%	0%	8%
Concern: Other Cerebrovascular Disease	0%	5%	0%	0%	2%
Concern: Peripheral Vascular Disease	0%	0%	0%	0%	0%
Concern: History Solid Organ Cancer	0%	0%	0%	0%	0%
Concern: History Lymphoma Leukemia	0%	0%	0%	0%	0%
Concern: History Bone Marrow Transplant	0%	0%	0%	0%	0%
Concern: History HIV	0%	0%	0%	0%	0%
Concern: Chronic Infectious Concerns	0%	0%	0%	0%	0%
Concern: Limited Cognitive Understanding	6%	0%	0%	8%	3%
Concern: Limited Social Support	0%	5%	10%	0%	3%
Concern: Repeated Non Compliance	0%	0%	10%	0%	2%
Concern: History Drug Use	0%	0%	0%	0%	0%
Concern: History Alcohol Abuse	0%	0%	0%	0%	0%
Concern: Narcotic Dependence	0%	0%	0%	0%	0%
Concern: History Smoking	0%	0%	0%	0%	0%
Concern: Currently Smoking	0%	0%	0%	0%	0%
Concern: Severe Depression	0%	0%	0%	0%	0%
Concern: Other Major Psychological Diagnosis	6%	0%	0%	0%	2%
Concern: Neuro Abnormal	6%	5%	0%	0%	3%
Concern: Other Co-Morbidity	6%	0%	0%	0%	2%

**COVERAGE: April 1, 2019 - March 31, 2020**

**SITE: Hospital X - (Random 50 Patients)**

**Section 3 - Patients Receiving only Temporary Devices**

**Exhibit 10: General Hemodynamics**

The following table compare pre-implant general hemodynamics for patients receiving durable devices at your site and STS Pedimacs overall.

**HOSPX-8888 (n=21)**

PRE-IMPLANT GENERAL HEMODYNAMICS		2019 Q2	2019 Q3	2019 Q4	2020 Q1	TOTAL
Patients	n	5	8	3	5	21
Heart Rate	Mean		130.67		125.67	128.17
	Std		4.04		20.50	13.50
	Missing	5	5	3	2	15

**Pedimacs (n=62)**

PRE-IMPLANT GENERAL HEMODYNAMICS		2019 Q2	2019 Q3	2019 Q4	2020 Q1	TOTAL
Patients	n	18	21	10	13	62
Heart Rate	Mean	111.20	132.22	135.67	148.60	131.64
	Std	18.25	12.00	42.62	34.59	26.26
	Missing	13	12	7	8	40

**COVERAGE: April 1, 2019 - March 31, 2020****SITE: Hospital X - (Random 50 Patients)****Section 3 - Patients Receiving only Temporary Devices****Exhibit 11: Echo Hemodynamics**

The following table compare pre-implant LVEDD for patients receiving durable devices at your site and STS Pedimacs overall.

**HOSPX-8888 (n=21)**

		2019 Q2	2019 Q3	2019 Q4	2020 Q1	TOTAL
<b>Patients</b>	<b>n</b>	<b>5</b>	<b>8</b>	<b>3</b>	<b>5</b>	<b>21</b>
<b>LVEDD</b>	<b>Mean</b>	4.19	4.49	4.27		<b>4.36</b>
	<b>Std</b>	2.21	2.68	0.70		<b>2.06</b>
	<b>Missing</b>	2	2	0	5	<b>9</b>

**Pedimacs (n=62)**

		2019 Q2	2019 Q3	2019 Q4	2020 Q1	TOTAL
<b>Patients</b>	<b>n</b>	<b>18</b>	<b>21</b>	<b>10</b>	<b>13</b>	<b>62</b>
<b>LVEDD</b>	<b>Mean</b>	3.92	3.89	5.14	4.89	<b>4.32</b>
	<b>Std</b>	1.60	2.35	1.35	0.96	<b>1.83</b>
	<b>Missing</b>	13	12	5	10	<b>40</b>

**COVERAGE: April 1, 2019 - March 31, 2020**

**SITE: Hospital X - (Random 50 Patients)**

**Section 3 - Patients Receiving only Temporary Devices**

The following tables summarize pre-implant RVEF at your site and STS Pedimacs.

**HOSPX-8888 (n=21)**

	2019 Q2	2019 Q3	2019 Q4	2020 Q1	TOTAL
<b>Patients (n)</b>	<b>5</b>	<b>8</b>	<b>3</b>	<b>5</b>	<b>21</b>
<b>RVEF</b>					
<b>Normal</b>	20%	25%	0%	20%	<b>19%</b>
<b>Mild</b>	0%	12%	33%	20%	<b>14%</b>
<b>Moderate</b>	20%	12%	66%	0%	<b>19%</b>
<b>Severe</b>	0%	12%	0%	20%	<b>9%</b>
<b>Not Done</b>	20%	12%	0%	0%	<b>9%</b>
<b>Not Applicable</b>	20%	25%	0%	0%	<b>14%</b>
<b>Unknown</b>	20%	0%	0%	40%	<b>14%</b>
<b>Aortic Regurgitation</b>					
<b>0 (none)</b>	60%	50%	66%	20%	<b>47%</b>
<b>1 (mild)</b>	0%	37%	0%	80%	<b>33%</b>
<b>2 (moderate)</b>	0%	0%	0%	0%	<b>0%</b>
<b>3 (severe)</b>	20%	0%	0%	0%	<b>4%</b>
<b>Not Recorded or Not Documented</b>	20%	12%	33%	0%	<b>14%</b>

**Pedimacs (n=62)**

	2019 Q2	2019 Q3	2019 Q4	2020 Q1	TOTAL
<b>Patients (n)</b>	<b>18</b>	<b>21</b>	<b>10</b>	<b>13</b>	<b>62</b>
<b>RVEF</b>					
<b>Normal</b>	11%	19%	20%	15%	<b>16%</b>
<b>Mild</b>	5%	9%	20%	7%	<b>9%</b>
<b>Moderate</b>	11%	14%	30%	7%	<b>14%</b>
<b>Severe</b>	16%	23%	10%	15%	<b>17%</b>
<b>Not Done</b>	33%	14%	0%	15%	<b>17%</b>
<b>Not Applicable</b>	16%	14%	0%	0%	<b>9%</b>
<b>Unknown</b>	5%	4%	20%	38%	<b>14%</b>
<b>Aortic Regurgitation</b>					
<b>0 (none)</b>	61%	42%	40%	15%	<b>41%</b>
<b>1 (mild)</b>	11%	33%	20%	69%	<b>32%</b>
<b>2 (moderate)</b>	0%	4%	0%	0%	<b>1%</b>
<b>3 (severe)</b>	5%	0%	0%	0%	<b>1%</b>
<b>Not Recorded or Not Documented</b>	22%	19%	40%	15%	<b>22%</b>

**COVERAGE: April 1, 2019 - March 31, 2020**

**SITE: Hospital X - (Random 50 Patients)**

**Section 3 - Patients Receiving only Temporary Devices**

**Exhibit 12: Swan Hemodynamics**

**HOSPX-8888 (n=21)**

SWAN HEMODYNAMICS		2019 Q2	2019 Q3	2019 Q4	2020 Q1	TOTAL
Patients	n	5	8	3	5	21
Pulmonary Artery Systolic Pressure (mmHg)	Mean	21.00	19.00	39.00		24.50
	Std		4.24			10.02
	Missing	4	6	2	5	17
Pulmonary Artery Diastolic Pressure (mmHg)	Mean	11.00	14.00	20.00		14.75
	Std		4.24			4.50
	Missing	4	6	2	5	17
Mean RA Pressure (mmHg)	Mean	10.00	7.75	13.00		9.00
	Std		2.99			3.16
	Missing	4	4	2	5	15
Pulmonary Artery Wedge Pressure (mmHg)	Mean	10.00	14.50	22.00		15.25
	Std		0.71			4.99
	Missing	4	6	2	5	17
Cardiac Index	Mean		4.35			4.35
	Std		0.70			0.70
	Missing	5	6	3	5	19

**Pedimacs (n=62)**

SWAN HEMODYNAMICS		2019 Q2	2019 Q3	2019 Q4	2020 Q1	TOTAL
Patients	n	18	21	10	13	62
Pulmonary Artery Systolic Pressure (mmHg)	Mean	20.20	34.83	23.33		27.14
	Std	4.66	32.66	13.80		22.26
	Missing	13	15	7	13	48
Pulmonary Artery Diastolic Pressure (mmHg)	Mean	13.75	23.00	16.67		18.69
	Std	2.63	13.31	4.16		9.84
	Missing	14	15	7	13	49
Mean RA Pressure (mmHg)	Mean	9.50	8.75	13.75	7.00	9.95
	Std	2.43	2.96	5.38		3.78
	Missing	12	13	6	12	43
Pulmonary Artery Wedge Pressure (mmHg)	Mean	11.50	15.25	17.00		14.10
	Std	3.87	4.19	7.07		4.68
	Missing	14	17	8	13	52

(Continued)

**COVERAGE: April 1, 2019 - March 31, 2020**

***SITE: Hospital X - (Random 50 Patients)***

***Section 3 - Patients Recieving only Temporary Devices***

***Exhibit 12: Swan Hemodynamics***

**Pedimacs (n=62)**

SWAN HEMODYNAMICS		2019 Q2	2019 Q3	2019 Q4	2020 Q1	TOTAL
Cardiac Index	Mean	3.15	4.13	2.18		3.48
	Std	0.49	1.69	0.11		1.40
	Missing	14	15	8	13	50



**COVERAGE: April 1, 2019 - March 31, 2020**

***SITE: Hospital X - (Random 50 Patients)***

**Section 3 - Patients Receiving only Temporary Devices**

***Exhibit 13: ECG Cardiac Rhythm***

The following tables summarize pre-implant ECG cardiac rhythm at your site and STS Pedimacs.

**HOSPX-8888 (n=21)**

	2019 Q2	2019 Q3	2019 Q4	2020 Q1	TOTAL
<b>Patients (n)</b>	<b>5</b>	<b>8</b>	<b>3</b>	<b>5</b>	<b>21</b>
<b>ECG Rhythm</b>					
<i>Sinus</i>	40%	62%	66%	100%	<b>66%</b>
<i>Atrial fibrillation</i>	0%	0%	0%	0%	<b>0%</b>
<i>Not done</i>	20%	0%	0%	0%	<b>4%</b>
<i>Paced: Ventricular pacing</i>	0%	0%	0%	0%	<b>0%</b>
<i>Paced: Atrial and ventricular pacing</i>	0%	12%	0%	0%	<b>4%</b>
<i>Unknown</i>	20%	0%	0%	0%	<b>4%</b>
<i>Other, specify</i>	20%	25%	33%	0%	<b>19%</b>

**Pedimacs (n=62)**

	2019 Q2	2019 Q3	2019 Q4	2020 Q1	TOTAL
<b>Patients (n)</b>	<b>18</b>	<b>21</b>	<b>10</b>	<b>13</b>	<b>62</b>
<b>ECG Rhythm</b>					
<i>Sinus</i>	66%	71%	60%	76%	<b>69%</b>
<i>Atrial fibrillation</i>	0%	0%	10%	0%	<b>1%</b>
<i>Not done</i>	5%	0%	0%	7%	<b>3%</b>
<i>Paced: Ventricular pacing</i>	0%	4%	0%	0%	<b>1%</b>
<i>Paced: Atrial and ventricular pacing</i>	0%	4%	0%	7%	<b>3%</b>
<i>Unknown</i>	5%	4%	0%	0%	<b>3%</b>
<i>Other, specify</i>	22%	14%	30%	7%	<b>17%</b>

**COVERAGE: April 1, 2019 - March 31, 2020**

***SITE: Hospital X - (Random 50 Patients)***

**Section 3 - Patients Receiving only Temporary Devices**

***Exhibit 14: VAD Indication***

The following table summarizes additional implant reasons that necessitated the placement of a VAD at your site and STS Pedimacs.

**HOSPX-8888 (n=21)**

	2019 Q2	2019 Q3	2019 Q4	2020 Q1	TOTAL
<b>Patients (n)</b>	<b>5</b>	<b>8</b>	<b>3</b>	<b>5</b>	<b>21</b>
<b>VAD Indication</b>					
<b>Failure to wean from CPB</b>	0%	0%	0%	0%	<b>0%</b>
<b>Post Cardiac Surgery</b>	0%	0%	0%	20%	<b>4%</b>
<b>None</b>	60%	25%	100%	80%	<b>57%</b>
<b>Failure to Wean from ECMO</b>	40%	75%	0%	0%	<b>38%</b>

**Pedimacs (n=62)**

	2019 Q2	2019 Q3	2019 Q4	2020 Q1	TOTAL
<b>Patients (n)</b>	<b>18</b>	<b>21</b>	<b>10</b>	<b>13</b>	<b>62</b>
<b>VAD Indication</b>					
<b>Failure to wean from CPB</b>	0%	0%	10%	0%	<b>1%</b>
<b>Post Cardiac Surgery</b>	22%	0%	0%	7%	<b>8%</b>
<b>None</b>	55%	47%	70%	69%	<b>58%</b>
<b>Failure to Wean from ECMO</b>	22%	52%	20%	23%	<b>32%</b>

**COVERAGE: April 1, 2019 - March 31, 2020**

**SITE: Hospital X - (Random 50 Patients)**

**Section 3 - Patients Receiving only Temporary Devices**

**Exhibit 15: Device Type**

The following tables summarize the implant side (location) of VADs at your site and STS Pedimacs.

**HOSPX-8888 (n=21)**

	2019 Q2	2019 Q3	2019 Q4	2020 Q1	TOTAL
<b>Patients (n)</b>	5	8	3	5	21
<b>Device Type</b>					
<b>LVAD</b>	80%	100%	66%	80%	85%
<b>RVAD</b>	20%	0%	0%	0%	4%
<b>BiVAD</b>	0%	0%	33%	20%	9%

**Pedimacs (n=62)**

	2019 Q2	2019 Q3	2019 Q4	2020 Q1	TOTAL
<b>Patients (n)</b>	18	21	10	13	62
<b>Device Type</b>					
<b>LVAD</b>	72%	90%	70%	84%	80%
<b>RVAD</b>	22%	9%	20%	0%	12%
<b>BiVAD</b>	5%	0%	10%	15%	6%

**COVERAGE: April 1, 2019 - March 31, 2020**

**SITE: Hospital X - (Random 50 Patients)**

**Section 3 - Patients Receiving only Temporary Devices**

**Exhibit 16: Previous Cardiac Operations**

This table lists the cardiac operations that the patient had prior to MCS implantation.

**HOSPX-8888 (n=21)**

PREVIOUS CARDIAC OPERATIONS	2019 Q2	2019 Q3	2019 Q4	2020 Q1	Total
Patients (n)	5	8	3	5	21
None	40%	50%	67%	20%	43%
CABG	0%	0%	0%	0%	0%
Aneurysmectomy (DOR)	0%	0%	0%	0%	0%
Aortic Valve replacement / repair	0%	0%	0%	0%	0%
Mitral Valve replacement / repair	0%	0%	0%	0%	0%
Tricuspid replacement /repair	0%	0%	0%	0%	0%
Congenital card surgery	20%	38%	33%	40%	33%
LVAD	20%	0%	0%	20%	10%
RVAD	20%	0%	0%	0%	5%
TAH	0%	0%	0%	0%	0%
Previous heart transplant	20%	0%	33%	0%	10%
Previous ECMO	40%	25%	0%	40%	29%
Other, specify	20%	13%	0%	0%	10%

**Pedimacs (n=62)**

PREVIOUS CARDIAC OPERATIONS	2019 Q2	2019 Q3	2019 Q4	2020 Q1	Total
Patients (n)	18	21	10	13	62
None	33%	38%	50%	38%	39%
CABG	0%	0%	0%	0%	0%
Aneurysmectomy (DOR)	0%	0%	0%	0%	0%
Aortic Valve replacement / repair	0%	0%	0%	0%	0%
Mitral Valve replacement / repair	0%	5%	0%	0%	2%
Tricuspid replacement /repair	6%	0%	0%	0%	2%
Congenital card surgery	28%	48%	30%	23%	34%
LVAD	6%	0%	0%	15%	5%
RVAD	6%	0%	0%	0%	2%
TAH	0%	0%	0%	0%	0%
Previous heart transplant	6%	0%	10%	0%	3%

(Continued)

**COVERAGE: April 1, 2019 - March 31, 2020**

***SITE: Hospital X - (Random 50 Patients)***

***Section 3 - Patients Recieving only Temporary Devices***

***Exhibit 16: Previous Cardiac Operations***

**Pedimacs (n=62)**

<b>PREVIOUS CARDIAC OPERATIONS</b>	<b>2019 Q2</b>	<b>2019 Q3</b>	<b>2019 Q4</b>	<b>2020 Q1</b>	<b>Total</b>
<b>Previous ECMO</b>	33%	10%	20%	38%	<b>24%</b>
<b>Other, specify</b>	22%	19%	20%	15%	<b>19%</b>

**COVERAGE: April 1, 2019 - March 31, 2020**

**SITE: Hospital X - (Random 50 Patients)**

**Section 3 - Patients Receiving only Temporary Devices**

**Exhibit 17: Clinical Events and Interventions during Implant Hospitalization**

This table lists the interventions that occurred during the implant hospitalization.

**HOSPX-8888 (n=21)**

IMPLANT HOSPITALIZATION EVENTS	2019 Q2	2019 Q3	2019 Q4	2020 Q1	Total
Patients (n)	5	8	3	5	21
None	20%	0%	33%	0%	10%
CABG	0%	0%	0%	0%	0%
Aortic Valve replacement / repair	0%	0%	0%	0%	0%
Mitral Valve replacement / repair	0%	0%	0%	0%	0%
Congenital cardiac surgery	0%	25%	0%	0%	10%
Other surgical procedures	40%	13%	0%	20%	19%
IABP	0%	0%	0%	0%	0%
ECMO	20%	75%	0%	80%	52%
LVAD	20%	0%	0%	20%	10%
RVAD	20%	0%	0%	0%	5%
TAH	0%	0%	0%	0%	0%
Dialysis	0%	0%	0%	20%	5%
Ultrafiltration	20%	13%	0%	0%	10%
Feeding Tube	0%	50%	0%	60%	33%
Intubation	60%	75%	67%	80%	71%
Major MI	0%	0%	0%	20%	5%
Major infections / Positive blood cultures	20%	13%	0%	20%	14%
Escalation to CPAP	20%	0%	0%	0%	5%
Arrhythmia	20%	38%	0%	20%	24%
Previous ECMO	40%	13%	0%	0%	14%
Previous heart transplant	20%	0%	0%	0%	5%
Treatment of Rejection	0%	0%	33%	0%	5%
Peritoneal Drain	0%	0%	0%	0%	0%
Non-cardiac procedure	0%	25%	0%	0%	10%

**COVERAGE: April 1, 2019 - March 31, 2020**

**SITE: Hospital X - (Random 50 Patients)**

**Section 3 - Patients Receiving only Temporary Devices**

**Exhibit 17: Clinical Events and Interventions during Implant Hospitalization**

Pedimacs (n=62)

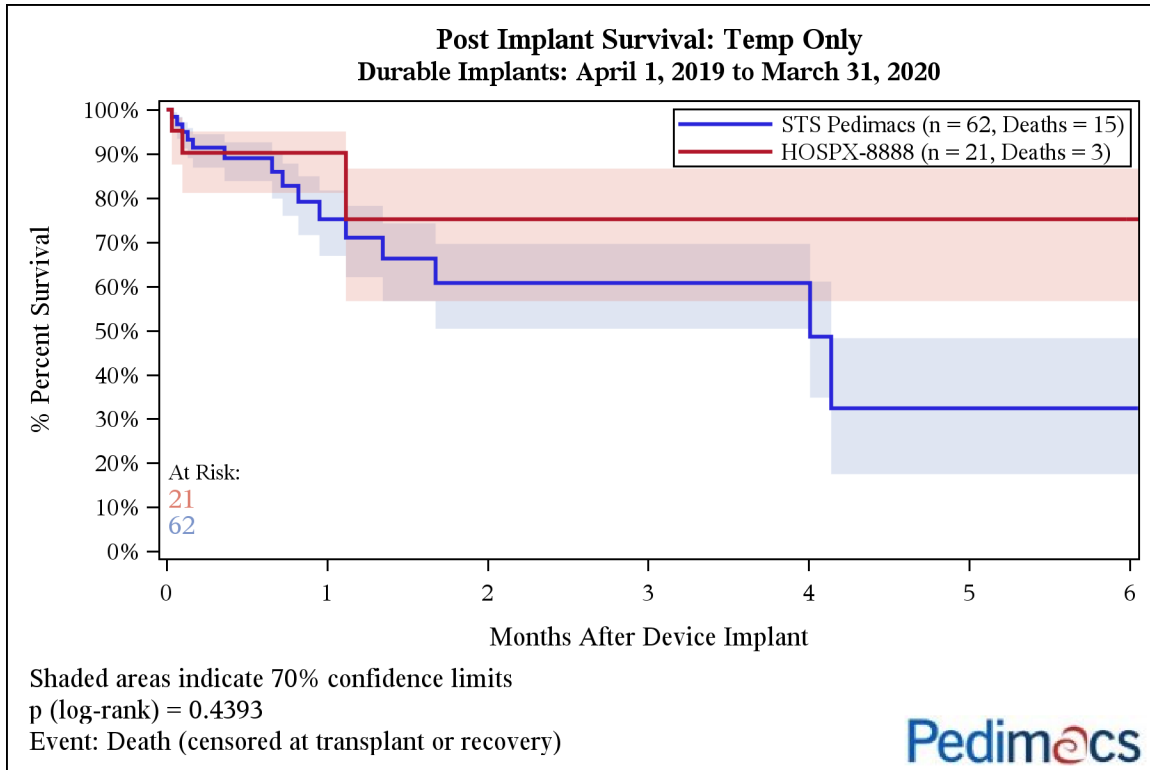
IMPLANT HOSPITALIZATION EVENTS	2019 Q2	2019 Q3	2019 Q4	2020 Q1	Total
Patients (n)	18	21	10	13	62
None	11%	0%	20%	0%	6%
CABG	0%	0%	0%	0%	0%
Aortic Valve replacement / repair	0%	0%	0%	0%	0%
Mitral Valve replacement / repair	0%	5%	0%	0%	2%
Congenital cardiac surgery	6%	24%	0%	15%	13%
Other surgical procedures	17%	5%	10%	8%	10%
IABP	0%	0%	0%	0%	0%
ECMO	33%	52%	40%	77%	50%
LVAD	6%	0%	0%	15%	5%
RVAD	6%	0%	0%	0%	2%
TAH	0%	0%	0%	0%	0%
Dialysis	6%	5%	0%	23%	8%
Ultrafiltration	11%	5%	0%	15%	8%
Feeding Tube	6%	38%	10%	62%	29%
Intubation	72%	86%	70%	77%	77%
Major MI	0%	0%	10%	8%	3%
Major infections / Positive blood cultures	11%	19%	10%	15%	15%
Escalation to CPAP	6%	14%	0%	0%	6%
Arrhythmia	22%	29%	20%	31%	26%
Previous ECMO	17%	5%	0%	0%	6%
Previous heart transplant	6%	0%	0%	0%	2%
Treatment of Rejection	0%	0%	10%	0%	2%
Peritoneal Drain	0%	0%	0%	0%	0%
Non-cardiac procedure	6%	10%	0%	8%	6%

COVERAGE: April 1, 2019 - March 31, 2020

SITE: Hospital X - (Random 50 Patients)

Section 3 - Patients Receiving only Temporary Devices

Exhibit 18: Post Implant Survival - Temp Only



Percent Survival [% (70% CI)]

Months after Device Implant	STS Pedimacs	HOSPX-8888
1	75.2% (66.9%-81.7%)	90.2% (81.2%-95.1%)
3	60.8% (50.4%-69.6%)	75.2% (56.7%-86.7%)
6	32.4% (17.5%-48.3%)	



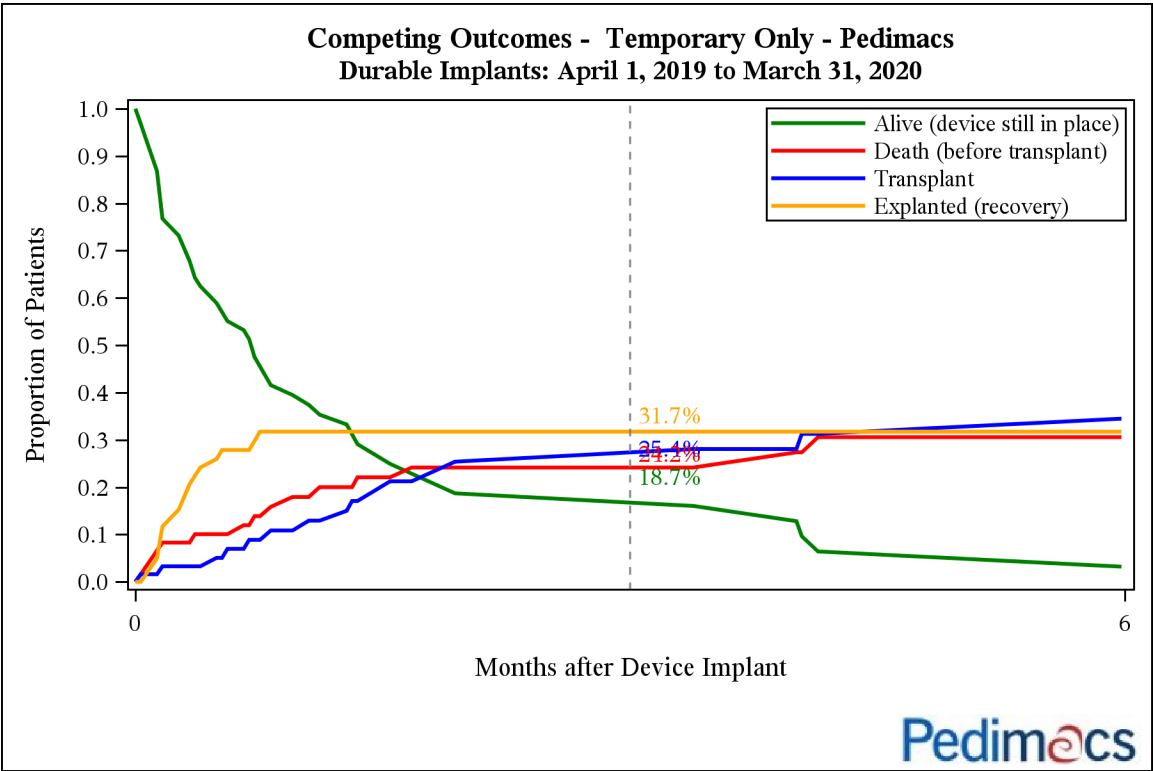
COVERAGE: April 1, 2019 - March 31, 2020

SITE: Hospital X - (Random 50 Patients)

Section 3 - Patients Recieving only Temporary Devices

Exhibit 19a: Competing Outcomes - Temporary Only - Pedimacs

This figure estimates the simultaneous probability across time of a patient moving from alive (with a device in place) to one of the following terminal events: transplanted, dead, or recovery (due to device removal). This depiction is for all primary LVADs in STS Pedimacs.



Number of Patients at Risk

Month
0
62

COVERAGE: April 1, 2019 - March 31, 2020

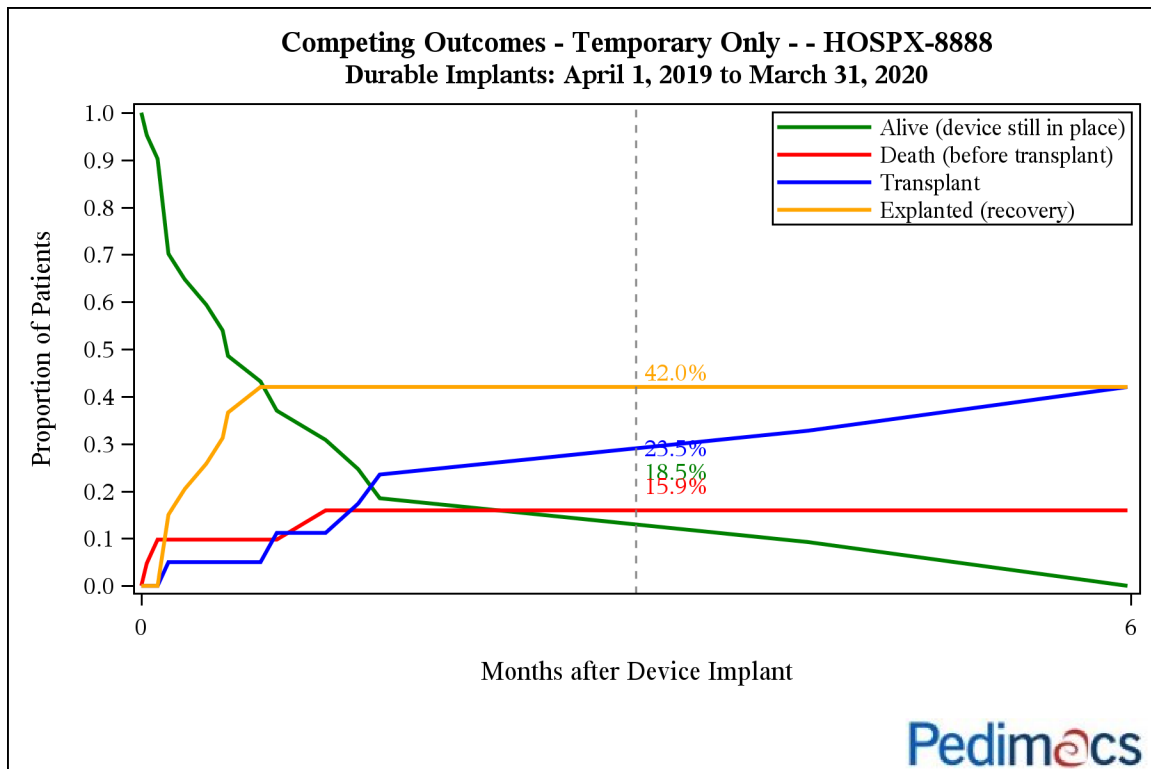
SITE: Hospital X - (Random 50 Patients)

### Section 3 - Patients Recieving only Temporary Devices

#### Exhibit 19b: Competing Outcomes - Temporary Only - HOSPX-8888

This figure estimates the simultaneous probability across time of a patient moving from alive (with a device in place) to one of the following terminal events: transplanted, dead, or recovery (due to device removal). This depiction is for all primary LVADs at your hospital.

Competing outcomes results for sites with low numbers of patients (e.g. < 20) may be extremely jagged and/or suppressed in this display and comparisons with Pedimacs competing outcome results will have limited value.



#### Number of Patients at Risk

Month
0
21

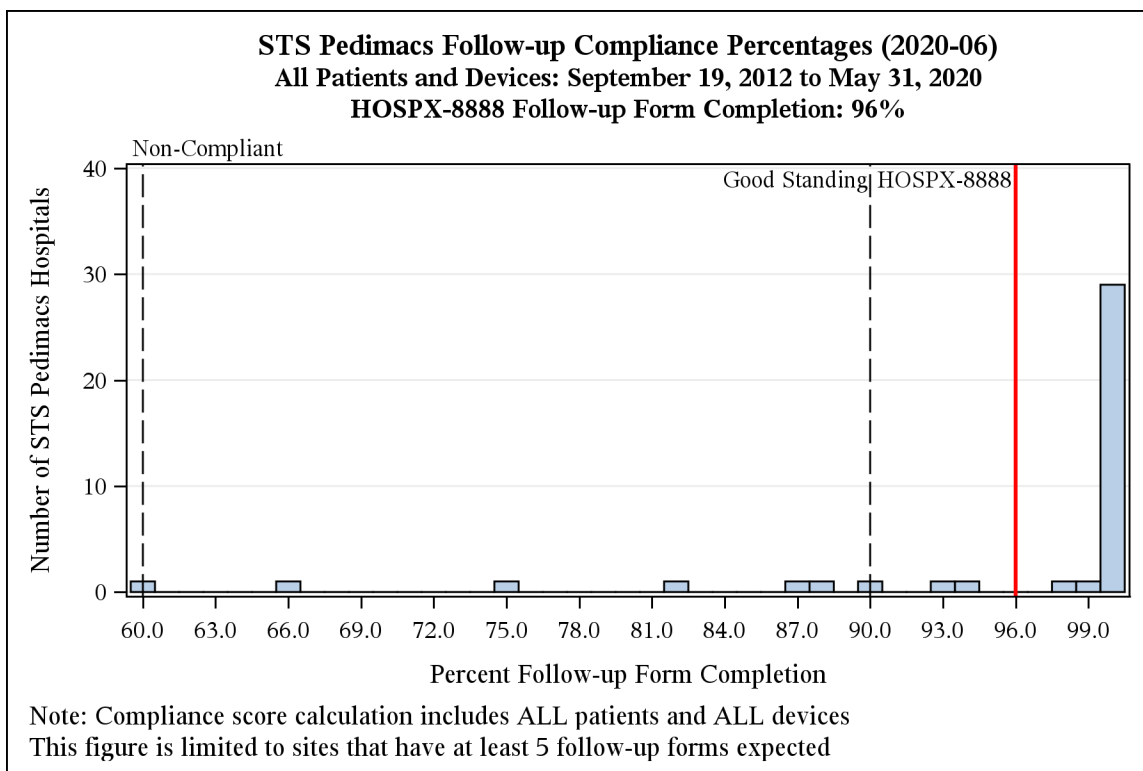
**COVERAGE: April 1, 2019 - March 31, 2020**

**SITE: Hospital X - (Random 50 Patients)**

### III. Registry Compliance

Site compliance is determined by the percentage of all follow-up forms that are due during this reporting period that have been completed. **This calculation has been updated to include ALL follow-up forms expected for ALL patients and ALL devices.** Only active sites that have at least 5 follow-up forms due are included in this figure (n = 40 sites).

STS Pedimacs has defined required compliance as 90%. If your hospital is below 90%, please examine your patient follow-up table that is contained in the Pedimacs Data Quality Quarterly Report. This table will identify the exact patients who have a 'past due' follow-up form. If your hospital is below 70% compliance. All sites below 60% compliance will be put on probationary status and will be deemed Non-Compliant.



***COVERAGE: April 1, 2019 - March 31, 2020***

***SITE: Hospital X - (Random 50 Patients)***

#### ***IV. Excluded Patients***

The following table lists patients at your site that are excluded from the analysis in this report. These patients include: 1) patients receiving only temporary support, 2) patients that have transferred to your site, 3) patients with missing implant dates.

**No patients were identified by this check.**

***IV. Glossary***

BiVAD: BiVentricular Assist Device  
BMI: Body Mass Index  
BP: Blood Pressure  
BSA: Body Surface Area  
BTC: Bridge to Candidacy  
BUN: Blood Urea Nitrogen  
CMS: Centers for Medicare and Medicaid  
COPD: Chronic Obstructive Pulmonary Disease  
CNS: Central Nervous System  
CRP: C - Reactive Protein  
CVA: Cerebrovascular Accident  
DCC: Data Coordinating Center  
DT: Destination Therapy  
ECG: Electrocardiogram  
ECMO: Extracorporeal-membrane Oxygenation  
EQ-5D: Euro Quality of Life  
FDA: Federal Drug Administration  
HF: Heart Failure  
IABP: Intra-Aortic Balloon Pump  
IgG: Immunoglobulin G  
INR: International Normalized Ratio  
Intermacs: Interagency Registry for Mechanically Assisted Circulatory Support  
LVAD: Left Ventricular Assist Device  
LVEF: Left Ventricular Ejection Fraction  
LVEDD: Left Ventricular End Diastolic Dysfunction  
LVSF: Left Ventricular Shortening Fraction  
MCSD: Mechanically Circulatory Support Device  
NHLBI: National Heart Lung and Blood Institute  
NT pro brain natriuretic peptide: N-Terminal pro brain Natriuretic peptide  
NYHA: New York Heart Association  
OR: Operating Room  
Pedimacs: Pediatric arm of INTERMACS  
Regurg: Regurgitation  
RVAD: Right Ventricular Assist Device  
RVEF: Right Ventricular Ejection Fraction  
SAE: Serious Adverse Event  
SGOT-AST: Serum Glutamic Oxaloacetic Transaminase  
SGPT-ALT: Serum Glutamic Pyruvic Transaminase  
STS: Society of Thoracic Surgeons  
TAH: Total Artificial Heart  
TIA: Transient Ischemic Attack  
VAD: Ventricular Assist Device  
VAS: Visual Analog Scale