

Dear Intermacs Web Based Data Entry Users,

Intermacs is happy to announce a new feature in the Web Based Data Entry (WBDE) system. Users will now be able to download all data entered into the Intermacs system in the Excel format. Please see the below tutorial:

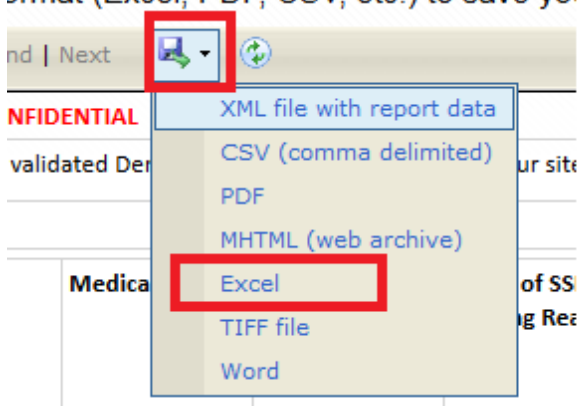
1. Log-in to the Intermacs website and click on the new “Reports” tab. You will find this beside the “Dashboard” tab.



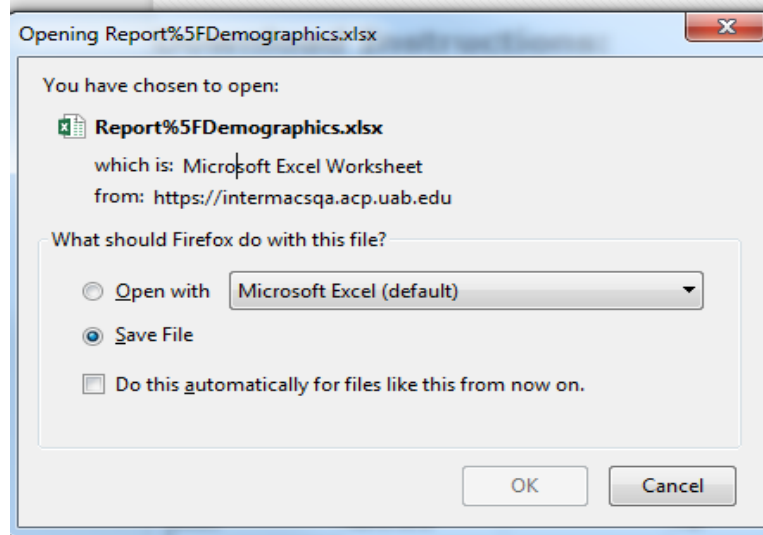
2. The “Reports” tab will bring you to a screen showing all the available forms. All forms in grey will be made available in future releases

Screening Log – Enrolled
Screening Log – Excluded
Demographics
Pre-Implant
Implant
Implant Discharge
Follow-up
Rehospitalization
Major Infection
Major Bleeding
Neuro Dysfunction
Device Malfunction/Failure and/or Pump Thrombus
Additional Events
Explant
Death
One Year Post Recovery
Transfer
Withdraw Consent

3. Click on your desired form and this will bring you to the “report view” screen. This screen simply shows a quick look at the data inside of your report. From here, click on the export icon in red below. This will bring up multiple formats. Select “Excel” from the drop down list.



4. After clicking “Excel” from the drop down list, you will be asked if you would like to open or save your report. From here, you will have an Excel spreadsheet containing all data entered by your site!



Please refer to (www.intermacs.org/reports) if you have any questions at all.

Thank you,

Devin Koehl | Program Manager I

Division of Cardiothoracic Surgery/Department of Surgery

LHRB 790C | 701 19th Street South | Birmingham, AL 35294

P: 205.934.0109 | devink@uab.edu



www.intermacs.org

CONFIDENTIALITY NOTICE: This e-mail transmission and any documents attached may contain confidential information. The information is intended only for the use of the recipient named above. If you have received this e-mail transmission in error, please contact the sender. Please do not disclose, print, copy, or distribute the contents of this e-mail transmission or its attachments without the appropriate permissions.